

Bloomfield Hills - Governor's Place Building - 1,867 Sq. Ft



PROPERTY ADDRESS:

33 Bloomfield Hills Parkway
Suite 130
Bloomfield Hills, MI 48304

SUITE SIZE: 1,867 Sq. Ft.

AVAILABLE: Immediately

FLOORPLAN: See page 2

LEASE RATE: \$25.00 PSF - general office

LEASE TERM: Negotiable

DEMOGRAPHICS:

Oakland County, MI:

Population (2015): 1,243,970

Median household income (2015): \$67,465

Median house value (2015): \$178,900

Bloomfield Hills, MI:

Population (2015): 42,112

Median household income (2015): \$112,154

Median house value (2015): \$350,600

Suite 130 can also be combined as follows:

Suite 110 - 3,060 sqft, Suite 125 - 2,746 sqft,

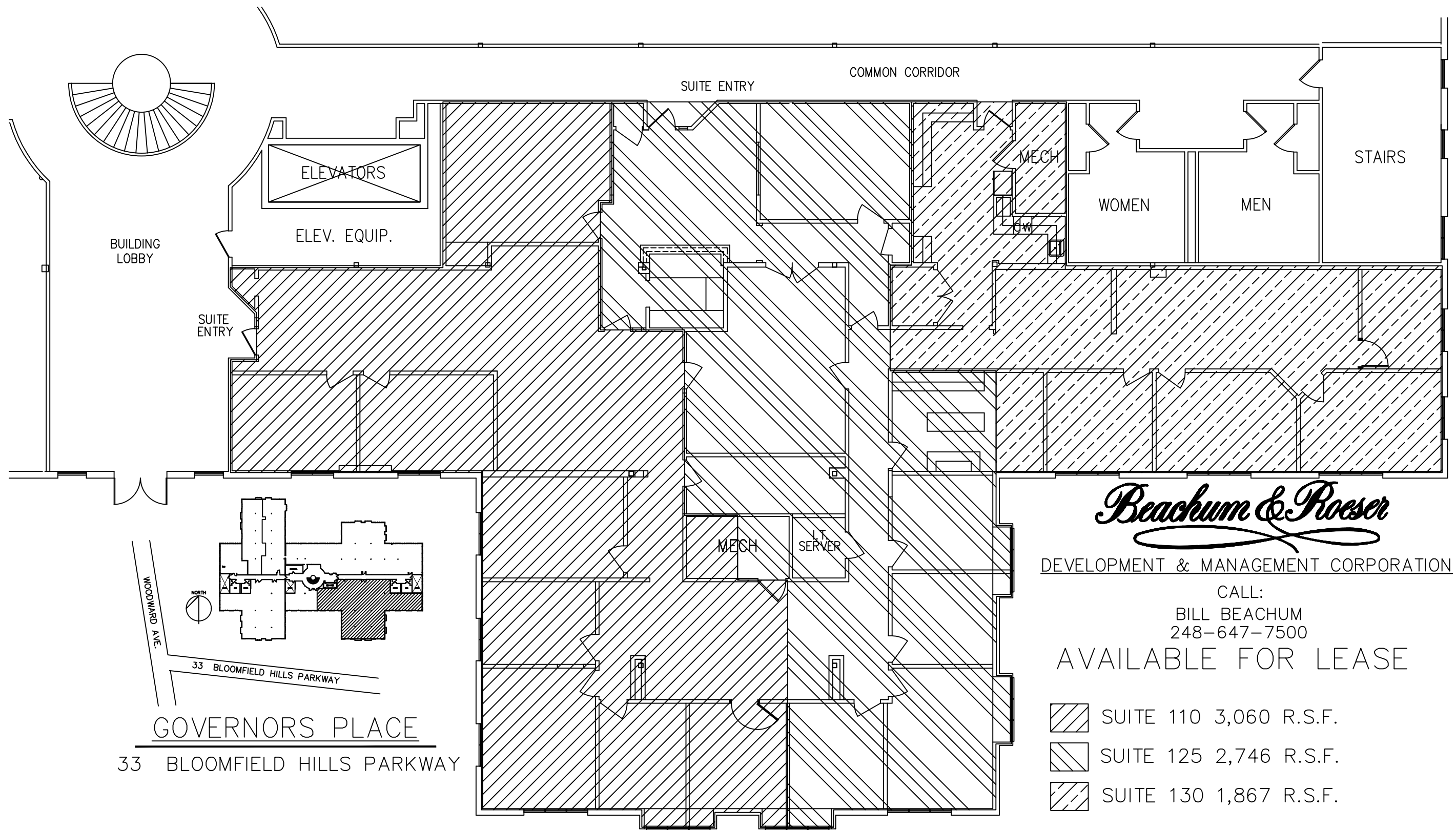
Suite 130 - 1,867 sqft for a total of 7,673 sqft



SUITE DESCRIPTION:

Large 1st floor suite

- Reception area, upon entry
- 4 windowed offices
- Kitchen with sink and countertop
- Copy room
- Large open area



Beachum & Poeser

DEVELOPMENT & MANAGEMENT CORPORATION

CALL:
BILL BEACHUM
248-647-7500

AVAILABLE FOR LEASE

GOVERNORS PLACE
33 BLOOMFIELD HILLS PARKWAY

