

## Bloomfield Hills - Governor's Place Building - 1,766 Sq. Ft



### PROPERTY ADDRESS:

33 Bloomfield Hills Parkway  
Suite 230  
Bloomfield Hills, MI 48304

**SUITE SIZE:** 1,766 Sq. Ft.

**AVAILABLE:** September 1, 2026

**FLOORPLAN:** See page 2

**LEASE RATE:** \$25.00 psf – General Office

**LEASE TERM:** Negotiable

### DEMOGRAPHICS:

#### *Oakland County, MI:*

Population (2015): 1,243,970  
Median household income (2015): \$67,465  
Median house value (2015): \$178,900

#### *Bloomfield Hills, MI:*

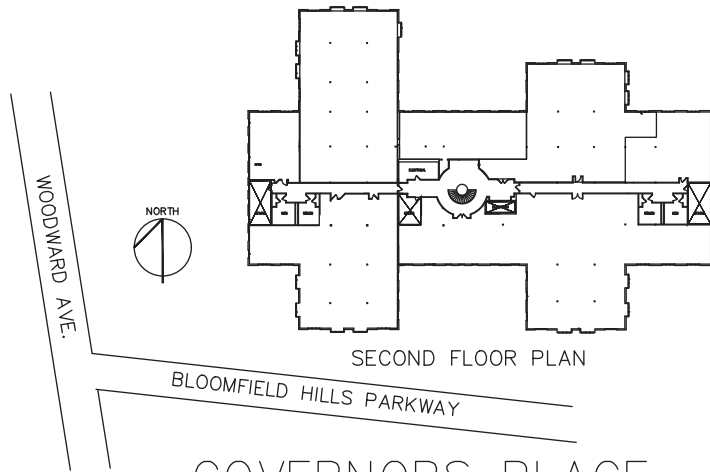
Population (2015): 42,112  
Median household income (2015): \$112,154  
Median house value (2015): \$350,600



### SUITE DESCRIPTION:

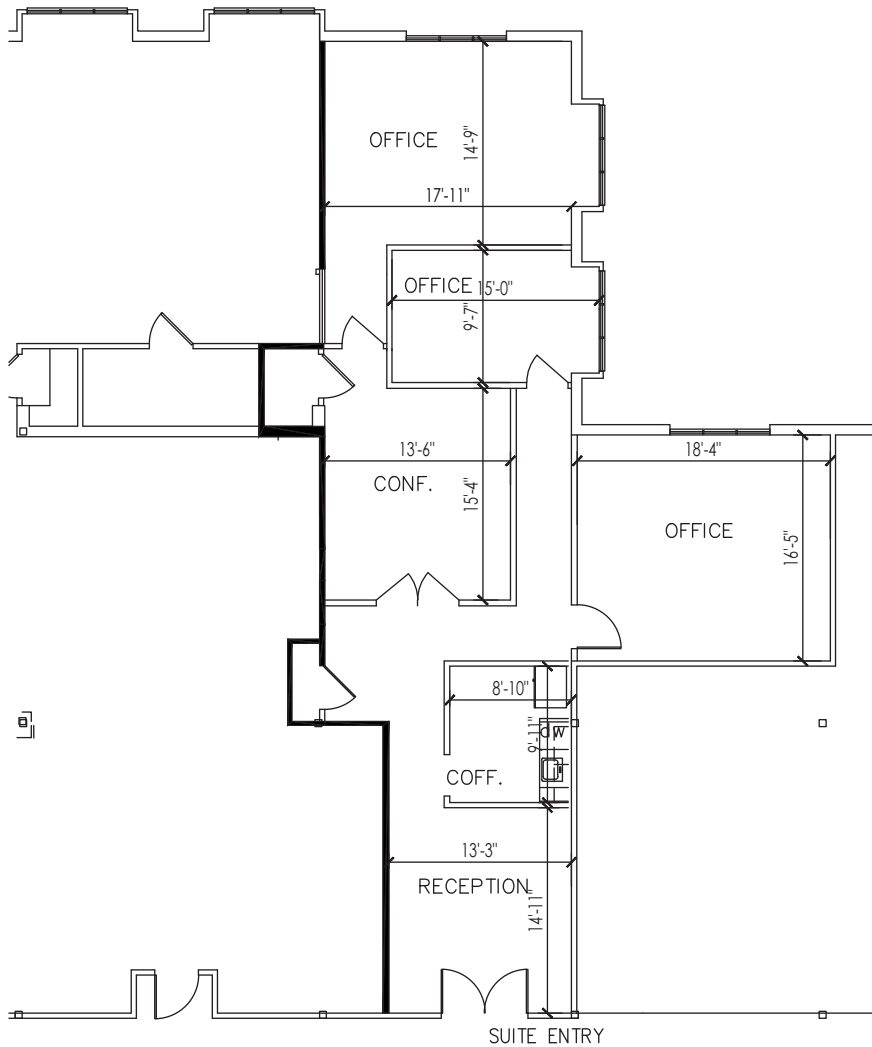
- 3 windowed offices
- A large conference room
- Kitchen
- Reception area

Other features include individual control over the HVAC; windows that open and plenty of convenient parking.



GOVERNORS PLACE

33 BLOOMFIELD HILLS PARKWAY



APPROX. 1,766 R.S.F. TOTAL

SUITE 230

SCALE: 1/8"=1'-0"

*Beachum & Poeser*

DEVELOPMENT & MANAGEMENT CO.

CONTACT:  
BILL BEACHUM  
248-647-7500