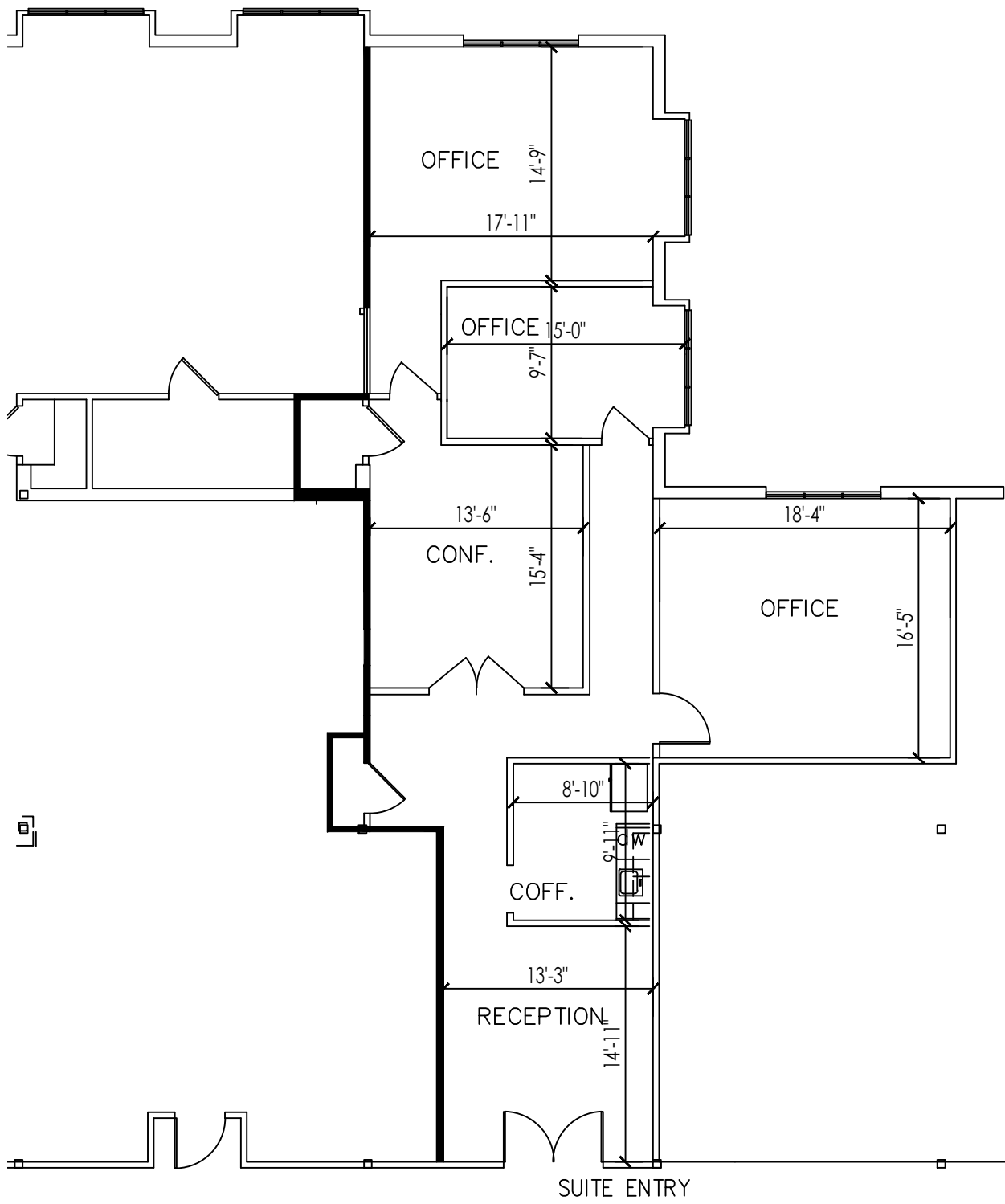


GOVERNORS PLACE  
 33 BLOOMFIELD HILLS PARKWAY



APPROX. 1,766 R.S.F. TOTAL

SUITE 230

SCALE: 1/8"=1'-0"

*Beachum & Roeser*

DEVELOPMENT & MANAGEMENT CO.

CONTACT:  
 BILL BEACHUM  
 248-647-7500