

## Bloomfield Hills - Governor's Place Building - 3,141 Sq. Ft



### PROPERTY ADDRESS:

33 Bloomfield Hills Parkway  
Suite 240  
Bloomfield Hills, MI 48304

**SUITE SIZE:** 3,141 Sq. Ft.

**AVAILABLE:** Immediately

**FLOORPLAN:** See page 2

**LEASE RATE:** \$25.00 psf – General Office

**LEASE TERM:** Negotiable

### DEMOGRAPHICS:

#### *Oakland County, MI:*

Population (2015): 1,243,970

Median household income (2015): \$67,465

Median house value (2015): \$178,900

#### *Bloomfield Hills, MI:*

Population (2015): 42,112

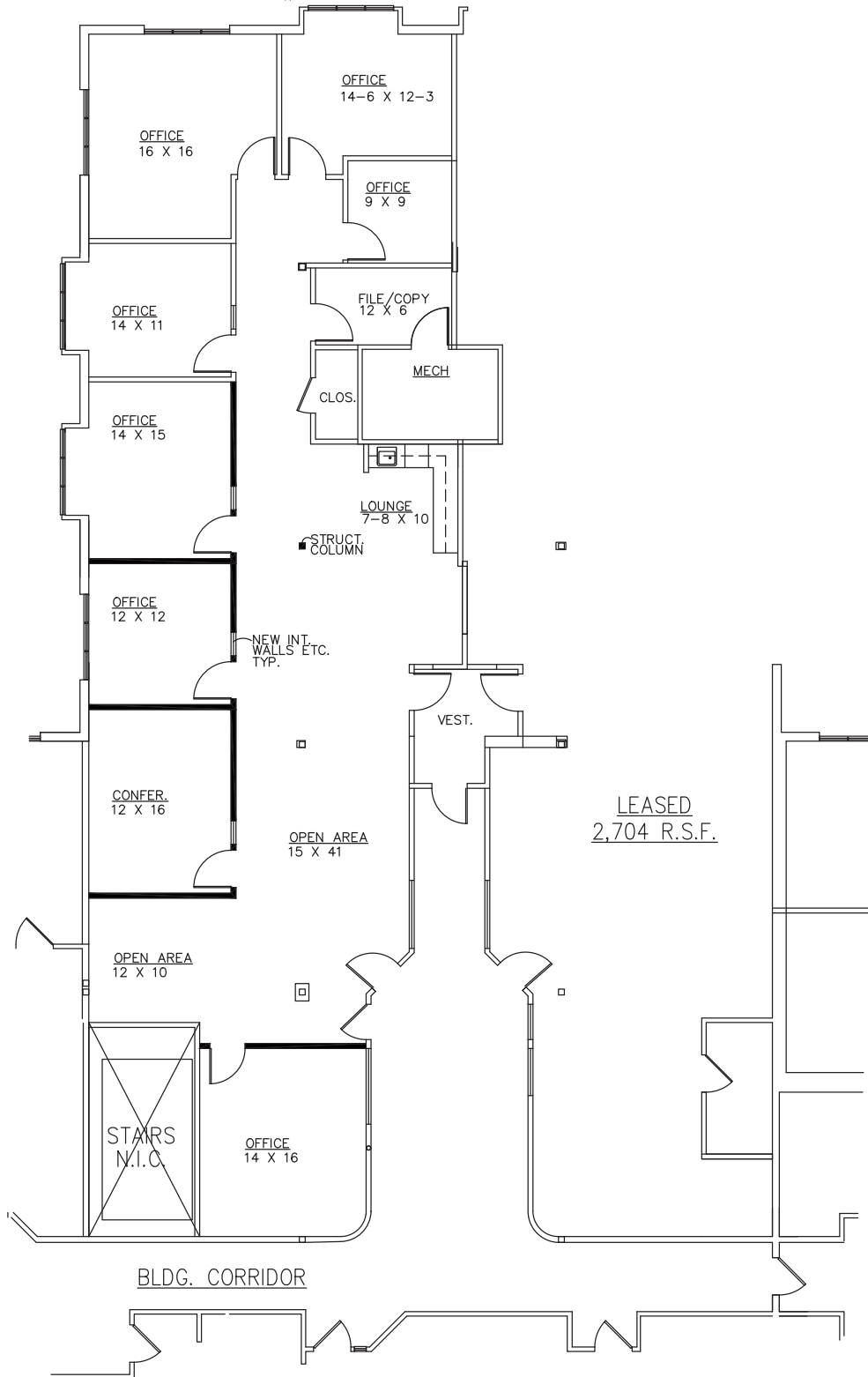
Median household income (2015): \$112,154

Median house value (2015): \$350,600



BEACHUM AND ROESER  
GOVERNORS PLACE  
33 BLOOMFIELD HILLS PARKWAY  
BLOOMFIELD HILLS, MICHIGAN  
PROPOSED FLOOR PLAN "A"  
APPROX. 3,141 R.S.F.

3-4-2024  
SUITE #240



**PARTIAL SECOND FLOOR PLAN**

SCALE: 1/8" = 1'-0"

FOR INFORMATION CALL:  
BILL BEACHUM  
248-647-7500