

Bloomfield Hills - Governor's Place Building - 3,439 Sq. Ft



PROPERTY ADDRESS:

33 Bloomfield Hills Parkway
Suite 240
Bloomfield Hills, MI 48304

SUITE SIZE: 3,439 Sq. Ft.

AVAILABLE: Immediately

FLOORPLAN: See page 2

LEASE RATE: Negotiable

LEASE TERM: 5 year term

DEMOGRAPHICS:

Oakland County, MI:

Population (2015): 1,243,970

Median household income (2015): \$67,465

Median house value (2015): \$178,900

Bloomfield Hills, MI:

Population (2015): 42,112

Median household income (2015): \$112,154

Median house value (2015): \$350,600



SUITE DESCRIPTION:

Nice 2nd floor suite available at the beautiful Governor's Place Executive Offices, located in prestigious Bloomfield Hills.

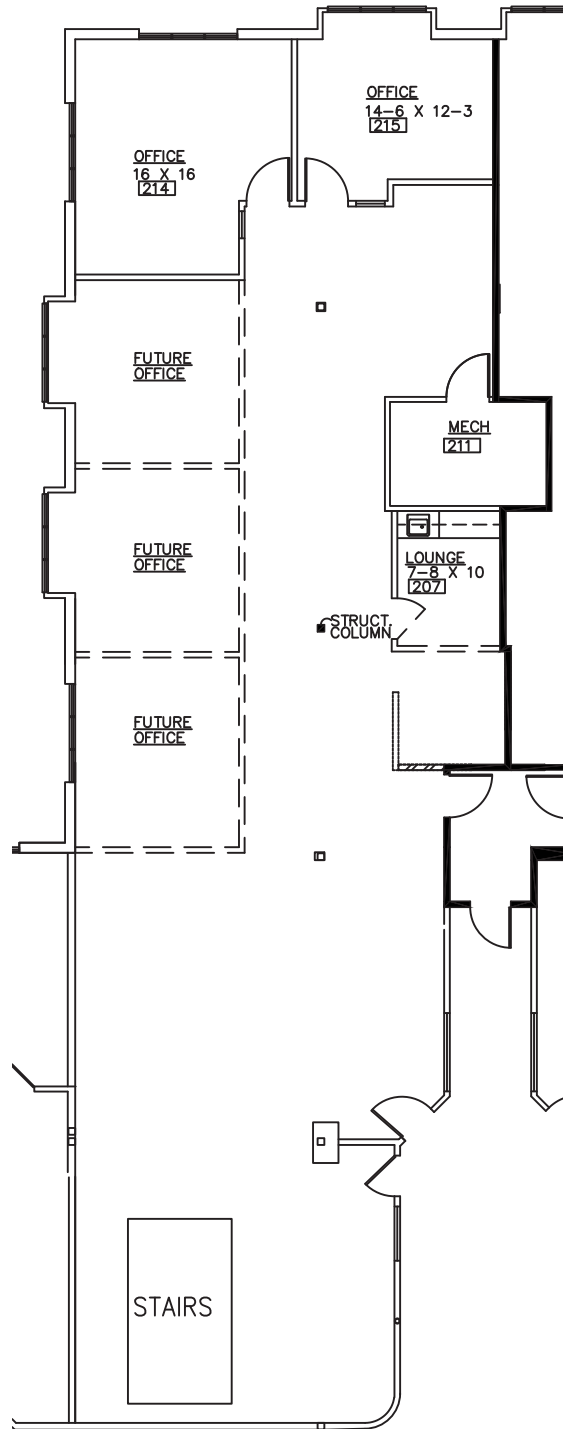
Suite features:

- 5 windowed offices; 2 are corner offices
- An employee lounge with sink and counter-top

Other features include individual control over the HVAC; windows that open and plenty of convenient parking.

BEACHUM AND ROESER
GOVERNORS PLACE

33 BLOOMFIELD HILLS PARKWAY
BLOOMFIELD HILLS, MICHIGAN
APPROX. 3,439 R.SQ.FT.
SUITE #240



BLDG. CORRIDOR



Beachum & Roeser

MANAGEMENT CORPORATION

CALL:
BILL BEACHUM
248-647-7500