

Bloomfield Hills - Governor's Place Building - 1,374 Sq. Ft



PROPERTY ADDRESS:

33 Bloomfield Hills Parkway
Suite 245
Bloomfield Hills, MI 48304

SUITE SIZE: 1,374 Sq. Ft.

AVAILABLE: Immediately

FLOORPLAN: See page 2

LEASE RATE: \$25.00 PSF - general office

LEASE TERM: Negotiable

DEMOGRAPHICS:

Oakland County, MI:

Population (2015): 1,243,970
Median household income (2015): \$67,465
Median house value (2015): \$178,900

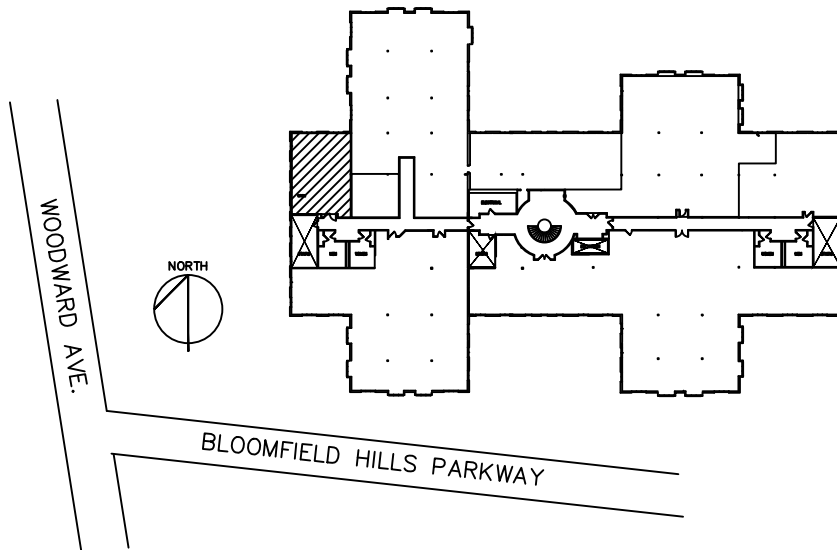
Bloomfield Hills, MI:

Population (2015): 42,112
Median household income (2015): \$112,154
Median house value (2015): \$350,600



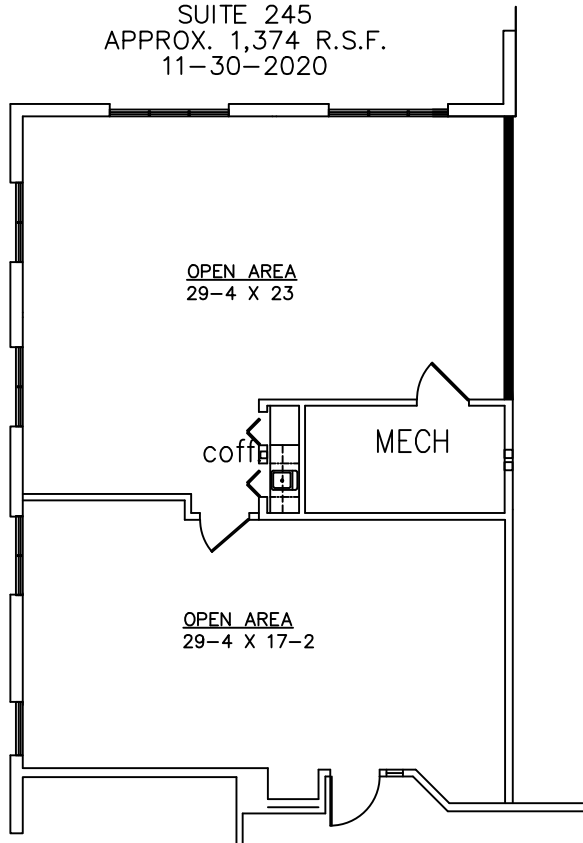
SUITE DESCRIPTION:

2nd floor suite available. This suite is a wide open space that is ready to be customized to meet your needs.



GOVERNORS PLACE

33 BLOOMFIELD HILLS PARKWAY
 BLOOMFIELD HILLS, MI.
 AVAILABLE FOR LEASE
 SUITE 245
 APPROX. 1,374 R.S.F.
 11-30-2020



PARTIAL SECOND FLOOR PLAN

SCALE: 1/8" = 1'-0"

Beachum & Poeser

MANAGEMENT CORPORATION

CALL:

BILL BEACHUM
 248-647-7500
 (PLAN NOT TO SCALE)