



PROPERTY ADDRESS:

1719 - 1779 West Big Beaver Rd.
Troy, MI 48084

SUITE SIZE: 2,939 Sq. Ft.

AVAILABLE: Immediately

FLOORPLAN: See page 2

LEASE RATE: Negotiable

LEASE TERM: 5 year term

DEMOGRAPHICS:

Oakland County, MI:

Population (2015): 1,243,970

Median household income (2015): \$67,465

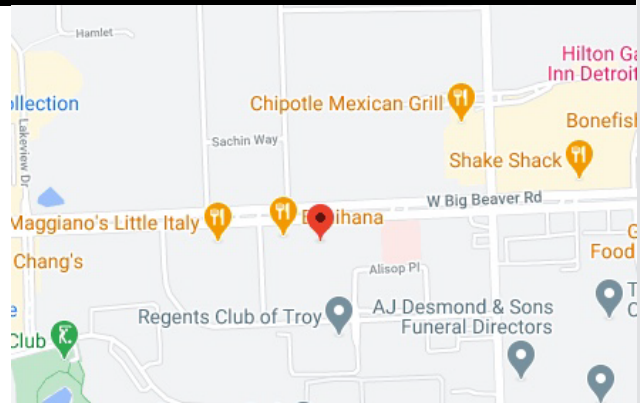
Median house value (2015): \$178,900

Troy, MI:

Population (2017): 83,813

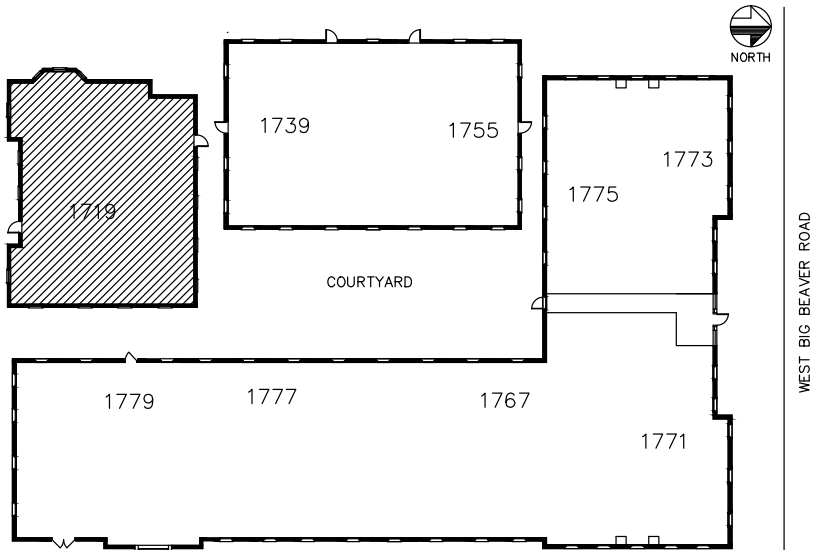
Median household income (2017): \$95,825

Median house value (2017): \$297,600



SUITE DESCRIPTION:

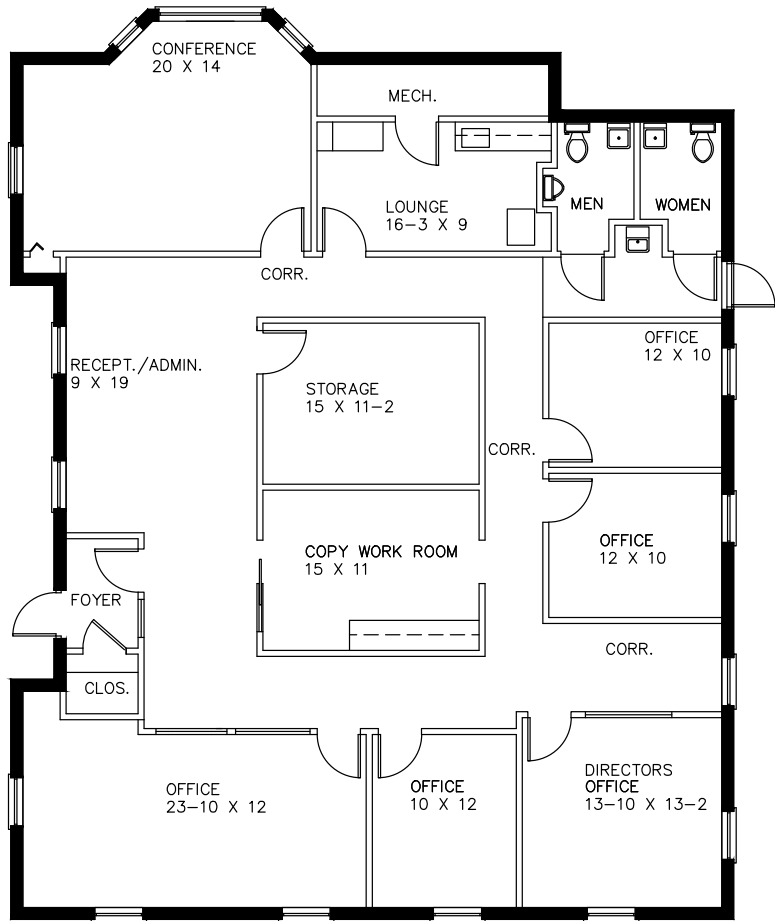
- Large suite with very high signage visibility from Big Beaver Rd.
- Foyered entry into reception/admin area
- 2 corner windowed offices
- 3 windowed offices
- Large windowed conference room
- Copy work room
- Storage area
- Employee lounge with sink & counter
- Private in-suite lavatories
- Other features include: individual control over HVAC; windows that open and plenty of convenient parking.



HERITAGE SQUARE

1719 WEST BIG BEAVER, TROY
AVAILABLE FOR LEASE

APPROX. 2,939 SQ.FT.
2-2-2021



MANAGEMENT CORPORATION

CALL:
BILL BEACHUM
248-647-7500