

Troy, MI - Heritage Square - Suite 1739 - 1,850 Sq. Ft



PROPERTY ADDRESS:

1719 - 1779 West Big Beaver Rd.
Troy, MI 48084

SUITE SIZE: 1,850 Sq. Ft.

AVAILABLE: Immediately

FLOORPLAN: See page 2

LEASE RATE: Negotiable

LEASE TERM: 5 year term

DEMOGRAPHICS:

Oakland County, MI:

Population (2015): 1,243,970

Median household income (2015): \$67,465

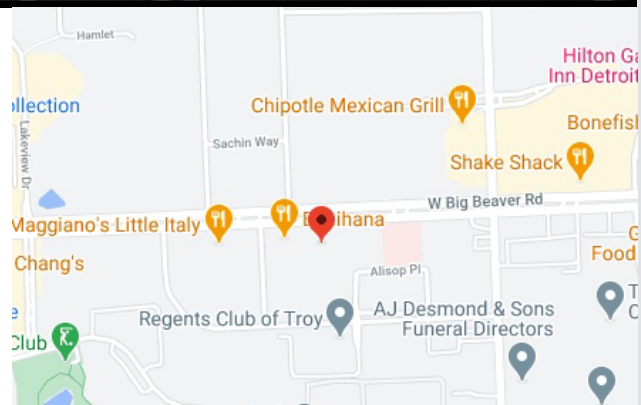
Median house value (2015): \$178,900

Troy, MI:

Population (2017): 83,813

Median household income (2017): \$95,825

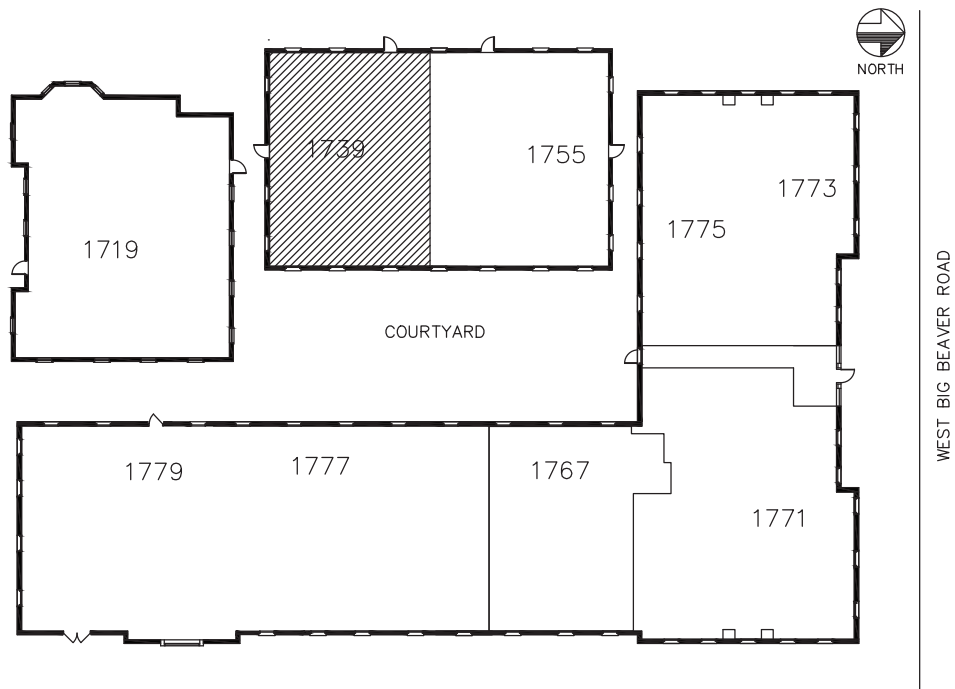
Median house value (2017): \$297,600



SUITE DESCRIPTION:

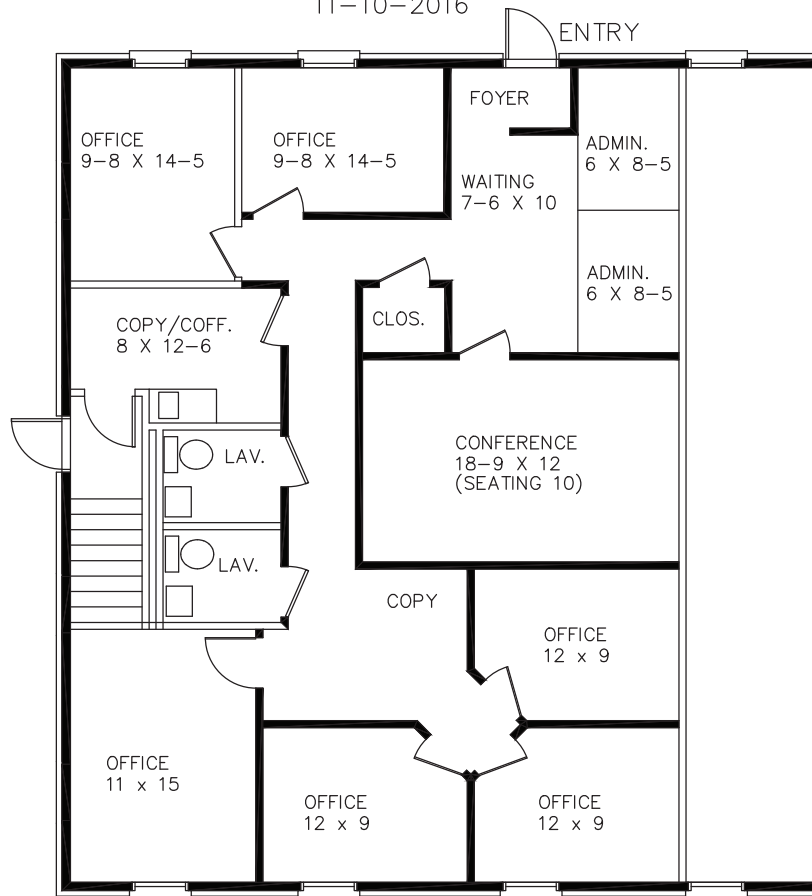
- Waiting area upon entry
- 2 admin stations
- 5 windowed offices (3 corner offices)
- 1 non-windowed office
- Large conference room
- Coffee/copy room
- 2 private lavatories
- View of the courtyard

Other features include: individual control over HVAC; windows that open and plenty of convenient parking.



HERITAGE SQUARE

1739 WEST BIG BEAVER TROY, MI.
 M.A.D.D.
 SPACE PLAN "B"
 1,850 SQUARE FEET
 11-10-2016



Beachum & Poeser

MANAGEMENT CORPORATION

CALL:
 BILL BEACHUM
 248-647-7500