

Troy, MI - Heritage Square - Suite 1755 - 1,985 Sq. Ft



PROPERTY ADDRESS:

1719 - 1779 West Big Beaver Rd.
Troy, MI 48084

SUITE SIZE: 1,985 Sq. Ft.

AVAILABLE: Immediately

FLOORPLAN: See page 2

LEASE RATE: Negotiable

LEASE TERM: 5 year term

DEMOGRAPHICS:

Oakland County, MI:

Population (2015): 1,243,970

Median household income (2015): \$67,465

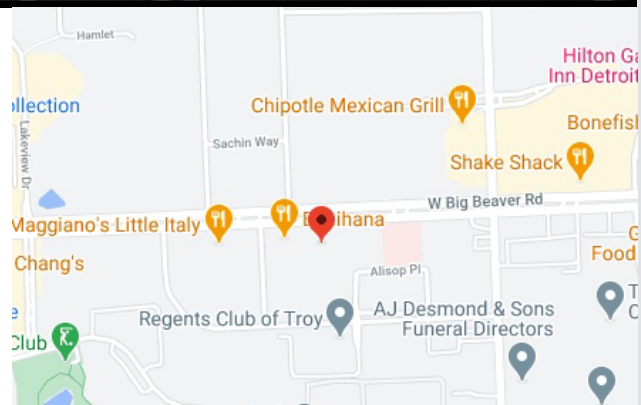
Median house value (2015): \$178,900

Troy, MI:

Population (2017): 83,813

Median household income (2017): \$95,825

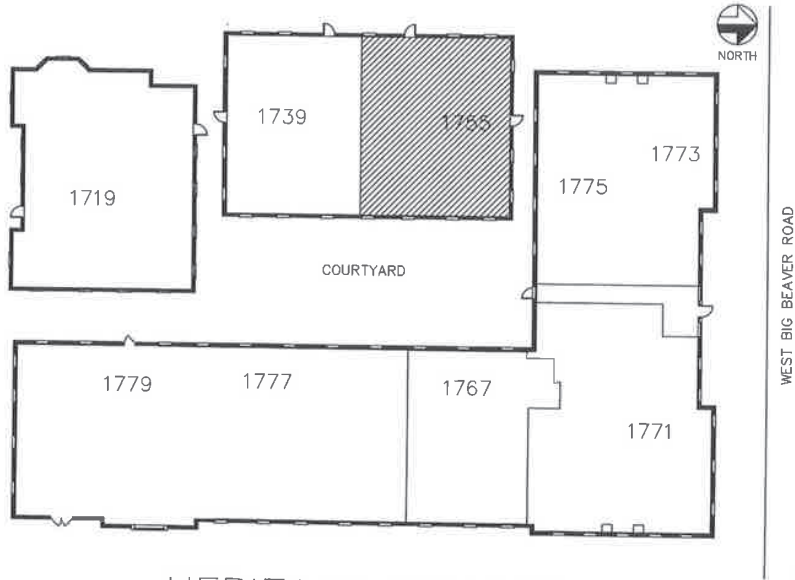
Median house value (2017): \$297,600



SUITE DESCRIPTION:

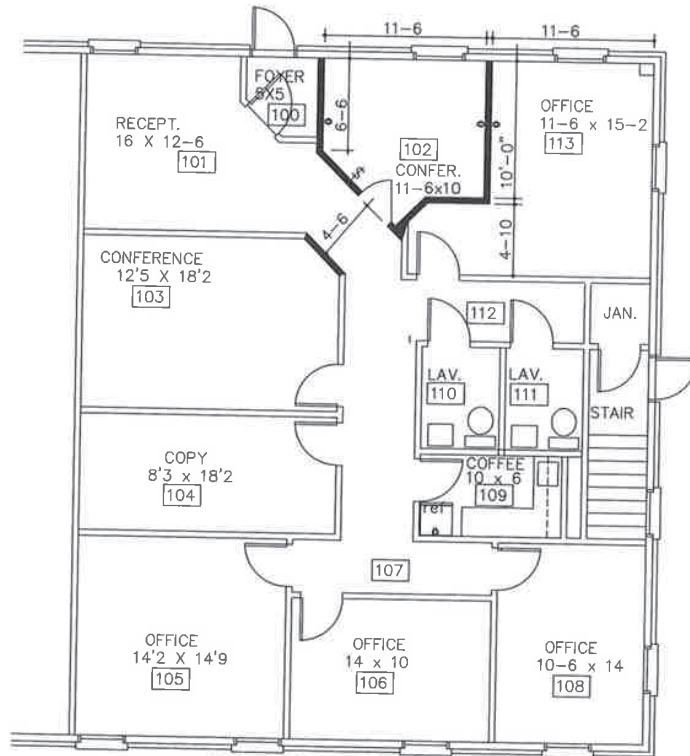
- Great Troy Location!
- 3 corner, windowed offices
- 1 windowed office
- Large reception upon entry
- 2 conference rooms
- Copy room
- Kitchen with sink & counter space
- Private lavatory

Other features include: individual control over HVAC; windows that open and plenty of convenient parking.



HERITAGE SQUARE

1755 WEST BIG BEAVER TROY, MI.
 1,985 SQUARE FEET
 05.02.22



Beauchum & Poeser

DEVELOPMENT & MANAGEMENT CORPORATION

CALL:
 BILL BEAUCHUM
 248-647-7500