

Troy, MI - Heritage Square - Suite 1773 - 1,556 Sq. Ft



PROPERTY ADDRESS:

1719 - 1779 West Big Beaver Rd.
Troy, MI 48084

SUITE SIZE: 1,556 Sq. Ft.

AVAILABLE: Immediately

FLOORPLAN: See page 2

LEASE RATE: Negotiable

LEASE TERM: 5 year term

DEMOGRAPHICS:

Oakland County, MI:

Population (2015): 1,243,970

Median household income (2015): \$67,465

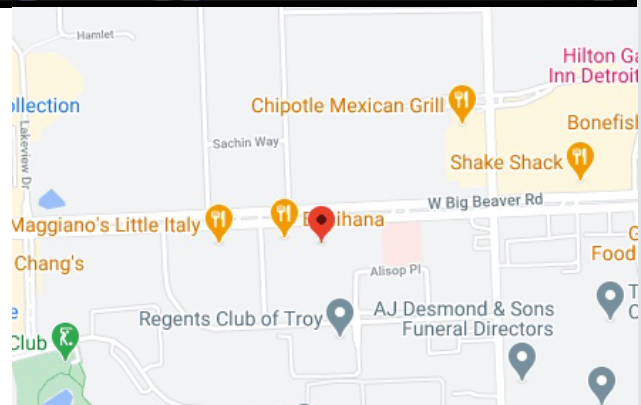
Median house value (2015): \$178,900

Troy, MI:

Population (2017): 83,813

Median household income (2017): \$95,825

Median house value (2017): \$297,600



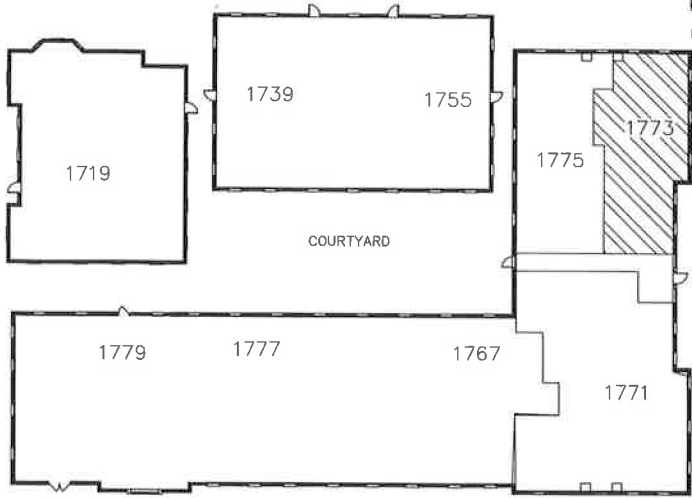
SUITE DESCRIPTION:

- Great Troy Location!
- 4-windowed offices
- Large open area upon entry
- Copy/file room

Other features include: individual control over HVAC; windows that open and plenty of convenient parking.

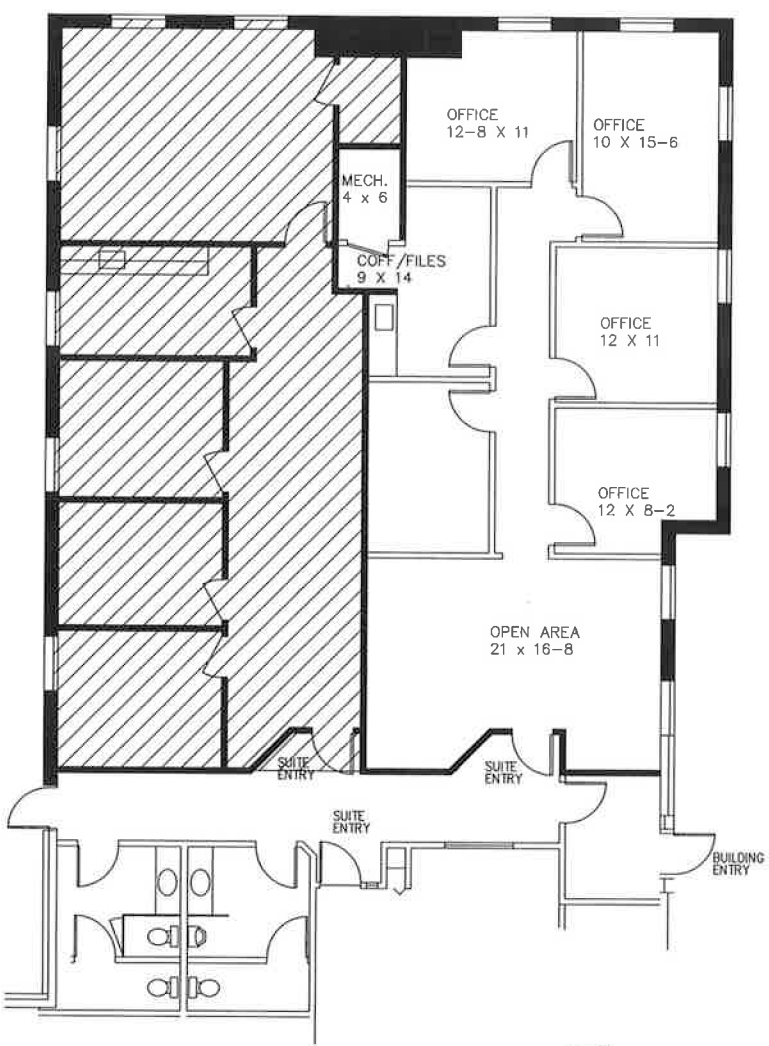


WEST BIG BEAVER ROAD



HERITAGE SQUARE

1773 WEST BIG BEAVER, TROY
 AVAILABLE FOR LEASE
 APPROX. 1,556 R. SQ.FT.



PARTIAL FLOOR PLAN

 LEASED

SCALE: NTS

Beachum & Roeser

DEVELOPMENT AND MANAGEMENT CORPORATION

CALL:
 BILL BEACHUM
 248-647-7500