

## Troy, MI - Heritage Square - Suite 1778 - 1,563 Sq. Ft



### PROPERTY ADDRESS:

1719 - 1779 West Big Beaver Rd.  
Troy, MI 48084

**SUITE SIZE:** 1,563 Sq. Ft.

**AVAILABLE:** Immediately

**FLOORPLAN:** See page 2

**LEASE RATE:** Negotiable

**LEASE TERM:** 5 year term

### DEMOGRAPHICS:

#### *Oakland County, MI:*

Population (2015): 1,243,970

Median household income (2015): \$67,465

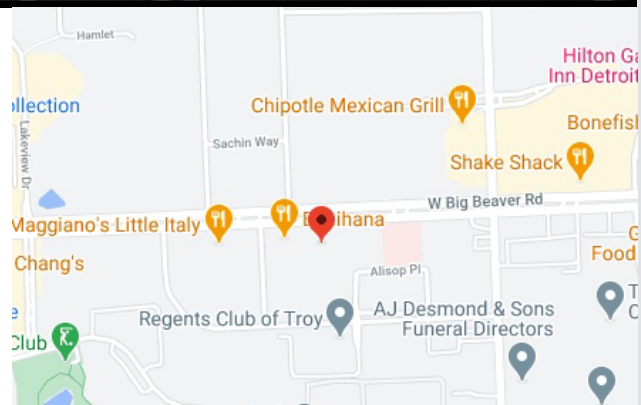
Median house value (2015): \$178,900

#### *Troy, MI:*

Population (2017): 83,813

Median household income (2017): \$95,825

Median house value (2017): \$297,600



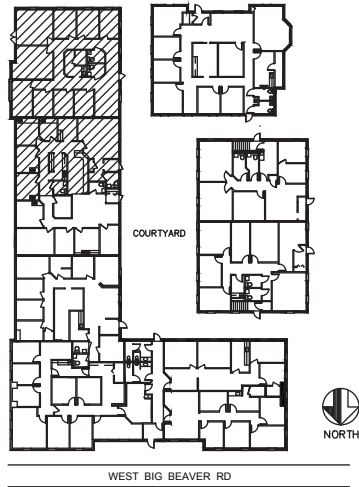
### SUITE DESCRIPTION:

- Waiting area upon entry
- Reception area
- 2 windowed, corner offices
- 4 non-windowed offices
- Private lavatory

Other features include: individual control over HVAC; windows that open and plenty of convenient parking.

# HERITAGE SQUARE

1719-1779 WEST BIG BEAVER ROAD - TROY, MI.



## 1779

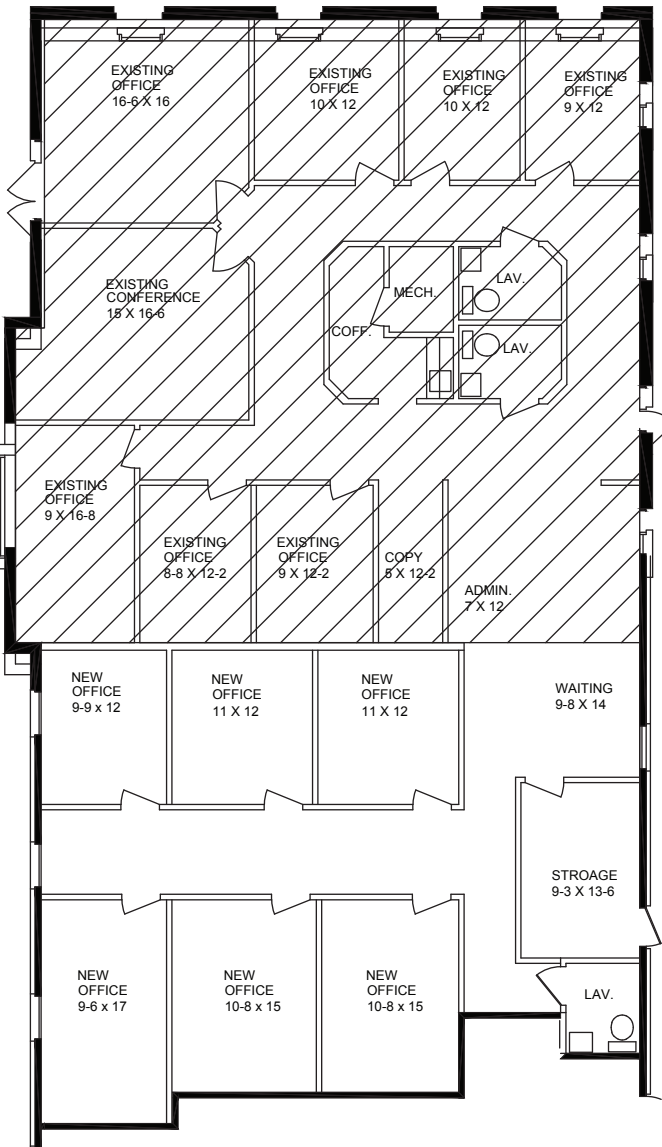
AVAILABLE FOR LEASE  
SUITE AS-BUILT  
APPROX. 3,965 SQ.FT.  
TOTAL - MAY DIVIDE

## 1779

AVAILABLE FOR LEASE  
AS-BUILT  
EXISTING:  
APPROX. 2,402 SQ.FT.

## 1778

AVAILABLE FOR LEASE  
AS-BUILT  
EXISTING:  
APPROX. 1,563 SQ.FT.



*Beachum & Poeser*

**MANAGEMENT & DEVELOPMENT CORPORATION**

CALL:  
BILL BEACHUM  
248-647-7500