

Troy, MI - Heritage Square - Suite 1779 - 2,402 Sq. Ft



PROPERTY ADDRESS:

1719 - 1779 West Big Beaver Rd.
Troy, MI 48084

SUITE SIZE: 2,402 Sq. Ft.

AVAILABLE: Immediately

FLOORPLAN: See page 2

LEASE RATE: Negotiable

LEASE TERM: 5 year term

DEMOGRAPHICS:

Oakland County, MI:

Population (2015): 1,243,970

Median household income (2015): \$67,465

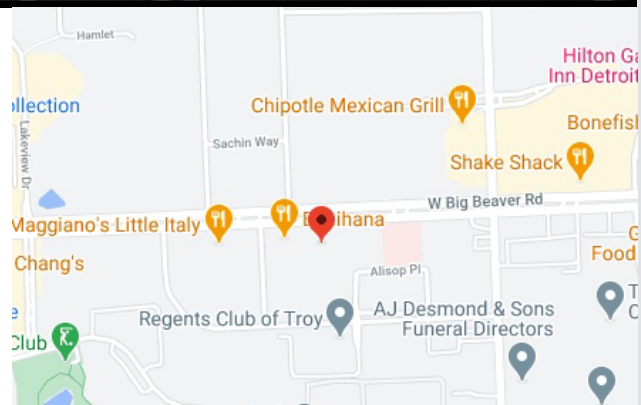
Median house value (2015): \$178,900

Troy, MI:

Population (2017): 83,813

Median household income (2017): \$95,825

Median house value (2017): \$297,600



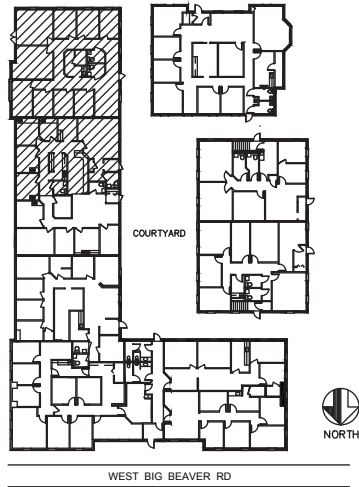
SUITE DESCRIPTION:

- Reception/Admin area upon entry
- 2 large corner, windowed offices
- 3 smaller windowed offices
- Large conference room
- Copy room
- Employee kitchen
- Private Ladies room
- Private mens room

Other features include: individual control over HVAC; windows that open and plenty of convenient parking.

HERITAGE SQUARE

1719-1779 WEST BIG BEAVER ROAD - TROY, MI.



1779

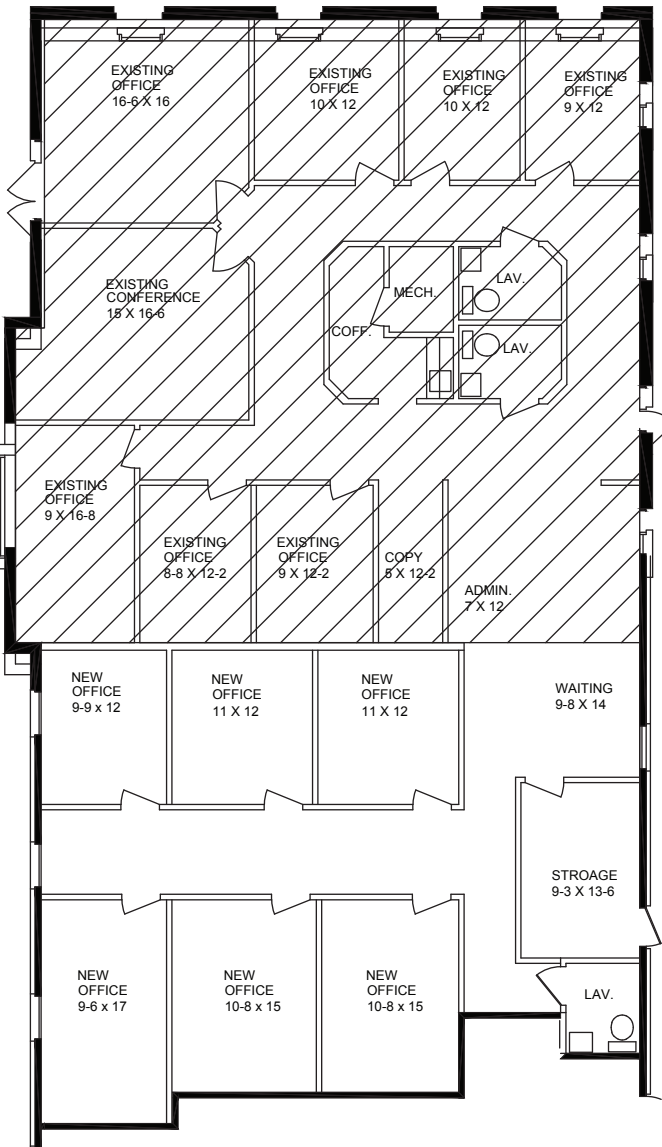
AVAILABLE FOR LEASE
SUITE AS-BUILT
APPROX. 3,965 SQ.FT.
TOTAL - MAY DIVIDE

1779

AVAILABLE FOR LEASE
AS-BUILT
EXISTING:
APPROX. 2,402 SQ.FT.

1778

AVAILABLE FOR LEASE
AS-BUILT
EXISTING:
APPROX. 1,563 SQ.FT.



Beachum & Poeser

MANAGEMENT & DEVELOPMENT CORPORATION

CALL:
BILL BEACHUM
248-647-7500