

Troy, MI - Heritage Square - Suite 1779 - 3,965 Sq. Ft



PROPERTY ADDRESS:

1719 - 1779 West Big Beaver Rd.
Troy, MI 48084

SUITE SIZE: 3,965 Sq. Ft.

AVAILABLE: Immediately

FLOORPLAN: See page 2

LEASE RATE: Negotiable

LEASE TERM: 5 year term

DEMOGRAPHICS:

Oakland County, MI:

Population (2015): 1,243,970

Median household income (2015): \$67,465

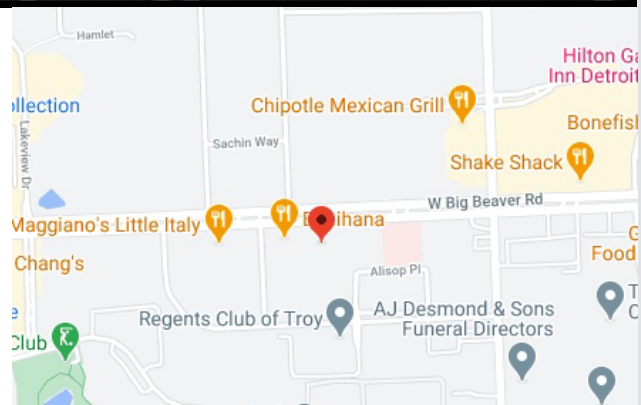
Median house value (2015): \$178,900

Troy, MI:

Population (2017): 83,813

Median household income (2017): \$95,825

Median house value (2017): \$297,600



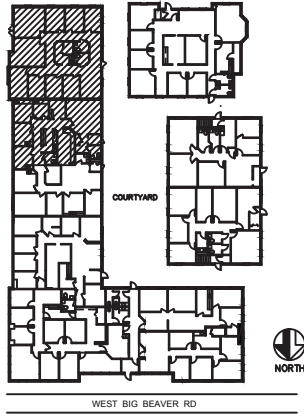
SUITE DESCRIPTION:

- Large corner suite available in the heart of the Troy Business District
- Large pylon signage available
- Large administrative/waiting area
- 7 windowed and 6 non-windowed offices
- Large conference room
- Coffee room
- Copy room
- Private lavatories

Other features include: individual control over HVAC; windows that open and plenty of convenient parking.

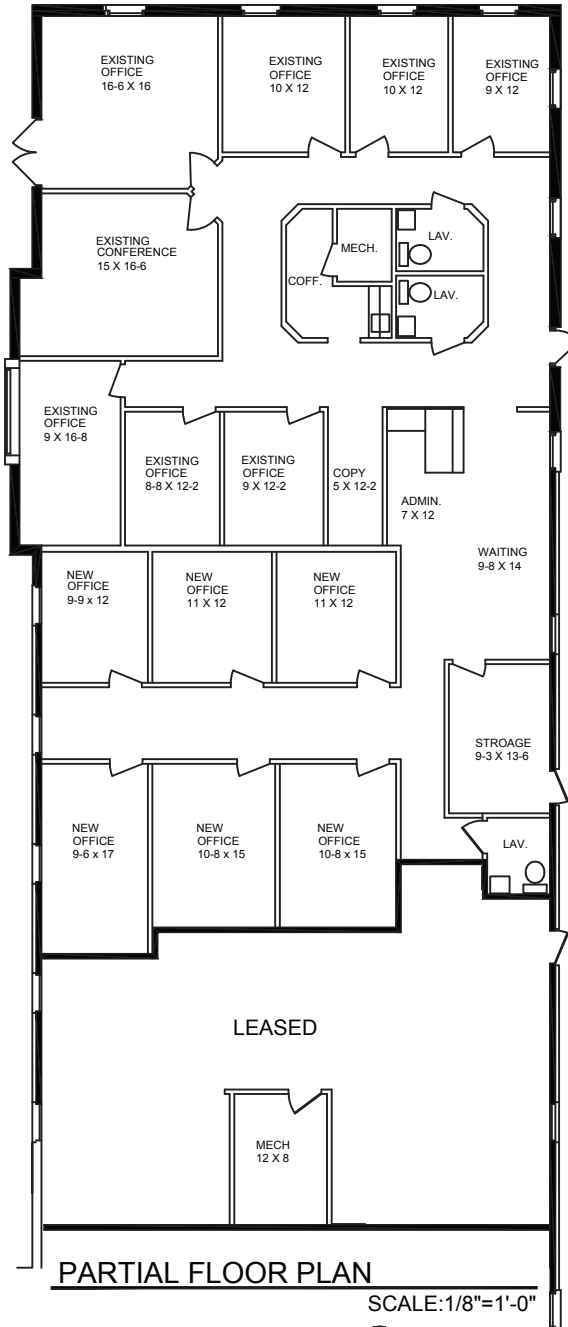
HERITAGE SQUARE

1719-1779 WEST BIG BEAVER ROAD - TROY, MI.



1779

AVAILABLE FOR LEASE
SUITE AS-BUILT
APPROX. 3,965 SQ.FT.
10-19-21



PARTIAL FLOOR PLAN

SCALE: 1/8" = 1'-0"

Beachum & Pioser

MANAGEMENT & DEVELOPMENT CORPORATION

CALL:
BILL BEACHUM
248-647-7500