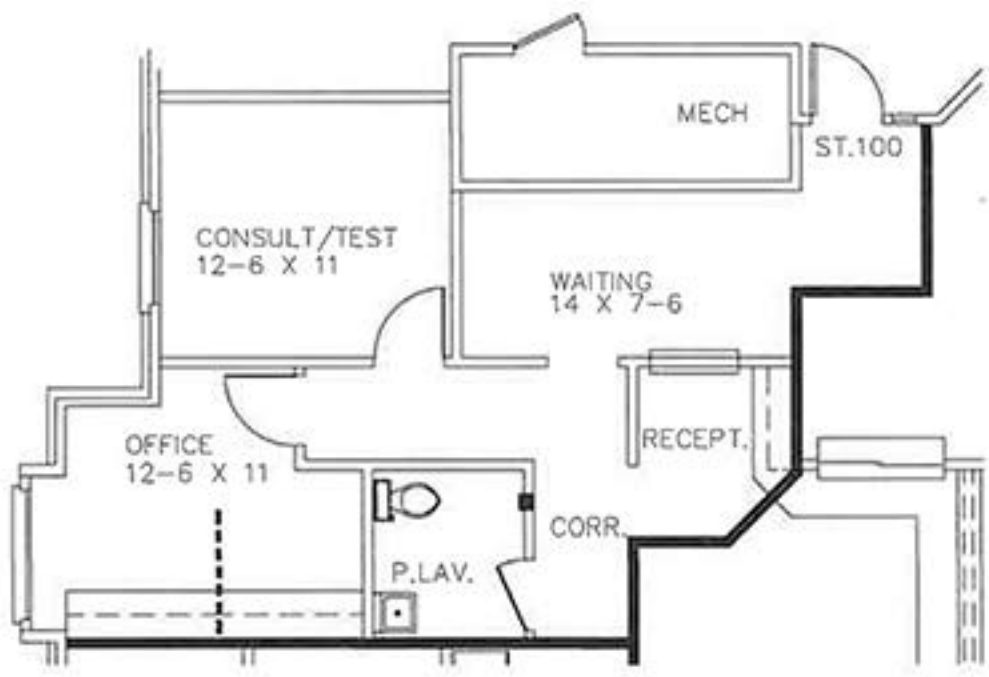


JAMESTOWNE EXECUTIVE OFFICES  
31000 TELEGRAPH ROAD, BINGHAM FARMS  
SUITE 102 APPROX. 880 R.S.F.



*Beachum & Poeser*

**MANAGEMENT AND DEVELOPMENT**

FOR INFORMATION:  
CONTACT  
BILL BEACHUM  
248-647-7500