

Bingham Farms - Jamestowne 31000 Building - 2,707 Sq. Ft



PROPERTY ADDRESS:

31000 Telegraph Road
Suite 100
Bingham Farms, MI 48025

SUITE SIZE: 2,707 Sq. Ft.
AVAILABLE: January 2022
FLOORPLAN: See page 2
LEASE RATE: Negotiable
LEASE TERM: 5 year term
DEMOGRAPHICS:

Oakland County, MI:

Population (2015): 1,243,970
Median household income (2015): \$67,465
Median house value (2015): \$178,900

Bingham Farms, MI:

Population (2015): 1,133
Median household income (2015): \$102,083
Median house value (2015): \$361,500



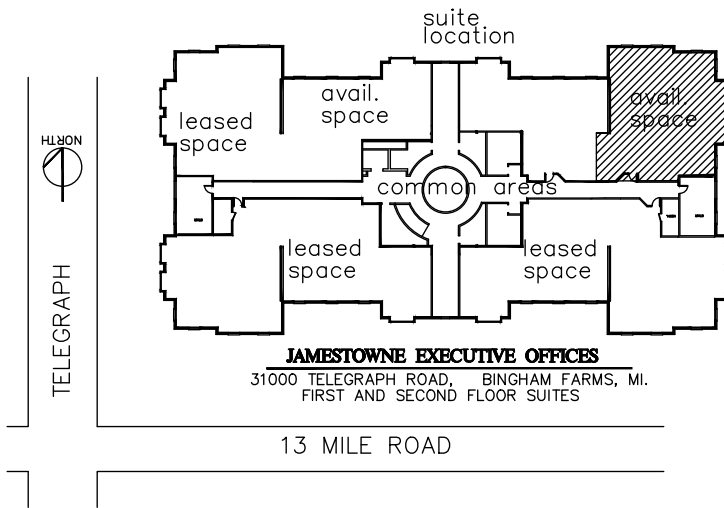
SUITE DESCRIPTION:

Medical Suite Available January 2022

Suite features:

- Foyered entry into spacious waiting area
- 6 exam rooms
- 1 large, corner, windowed office
- Consultation office
- Lab
- Test lab
- Employee lounge
- Charts & Assistant area
- Private restrooms for patients and staff

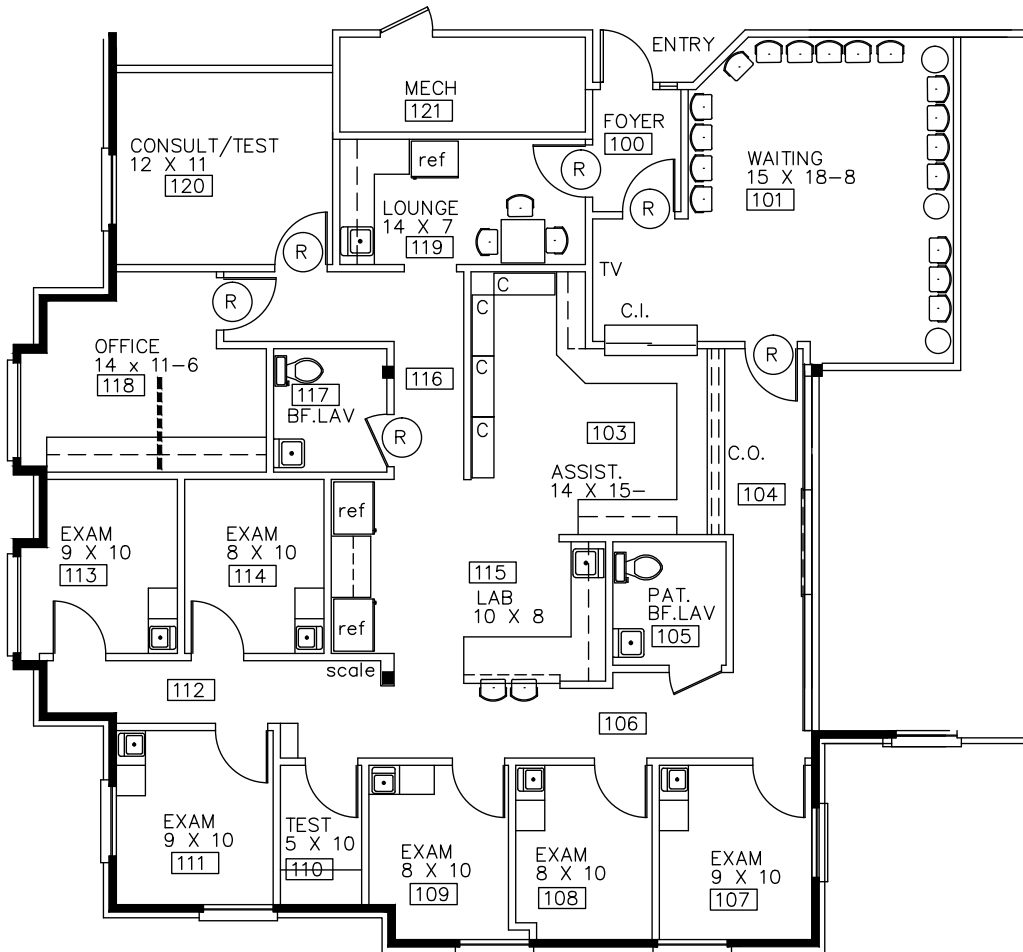
Other features include: individual control over HVAC; windows that open and plenty of convenient parking.



JAMESTOWNE EXECUTIVE OFFICES

31000 TELEGRAPH ROAD, BINGHAM FARMS, MI.

SUITE # 100
 AVAILABLE FOR LEASE
 APPROX. 2,707 R.S.F.
 9-22-21



Beachum & Poeser

MANAGEMENT & DEVELOPMENT CORPORATION

CALL:
 BILL BEACHUM
 248-647-7500