

Bingham Farms - Jamestowne 31000 Building - 2,690 Sq. Ft



PROPERTY ADDRESS:

31000 Telegraph Road
Suite 200
Bingham Farms, MI 48025

SUITE SIZE: 2,690 Sq. Ft.

AVAILABLE: Immediately

FLOORPLAN: See page 2

LEASE RATE: Negotiable

LEASE TERM: Negotiable

DEMOGRAPHICS:

Oakland County, MI:

Population (2015): 1,243,970
Median household income (2015): \$67,465
Median house value (2015): \$178,900

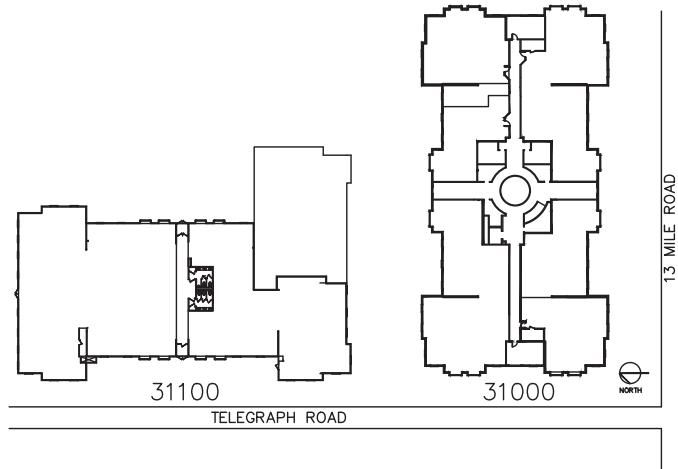
Bingham Farms, MI:

Population (2015): 1,133
Median household income (2015): \$102,083
Median house value (2015): \$361,500



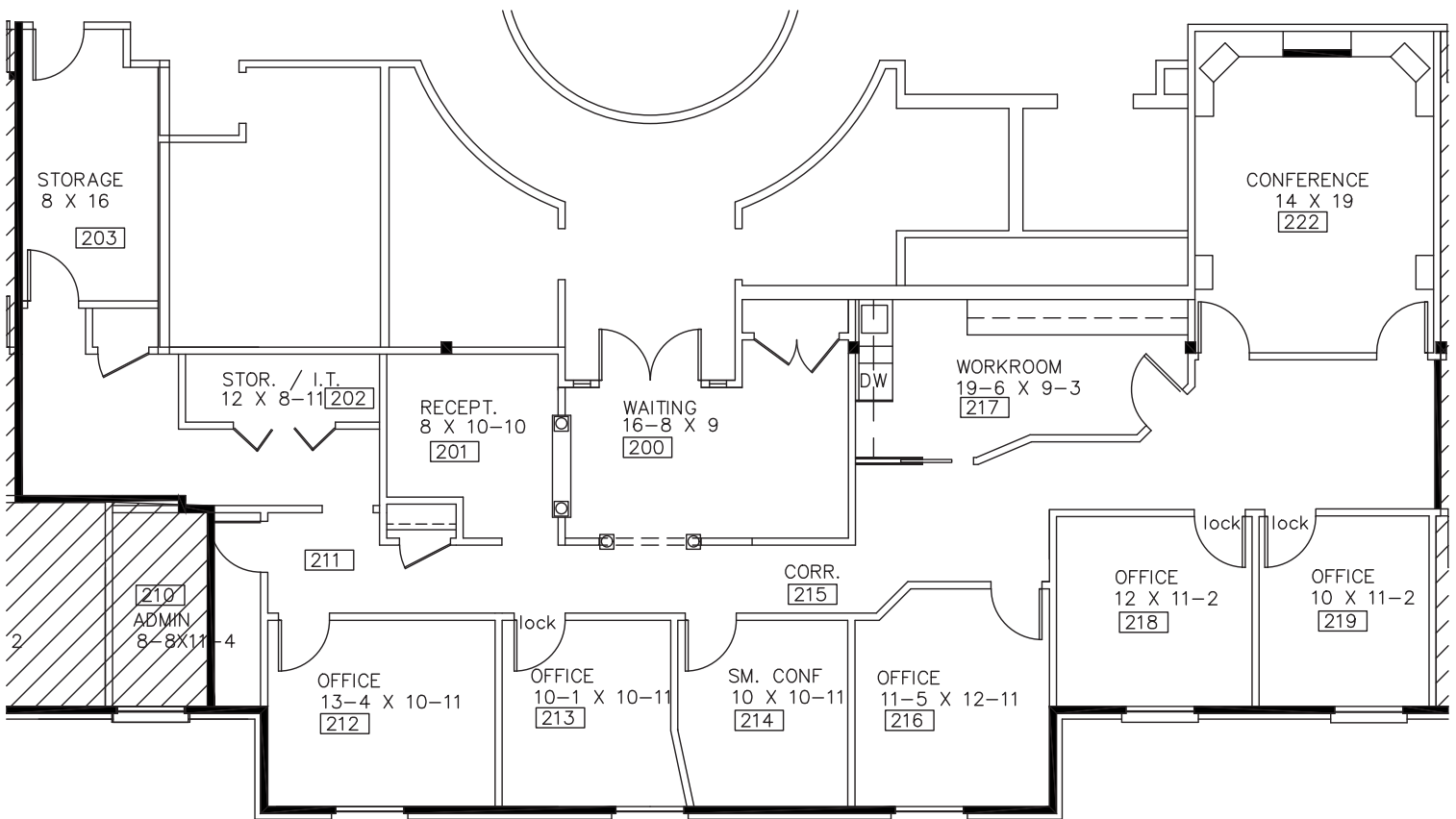
Large, beautiful 2nd floor suite available
Suite features:

- Entrance into large waiting area with window reception
- 5 windowed offices
- 1 large conference room
- Admin office
- Large meeting room with 3-step platforms
- File room
- Work room
- Storage/IT room
- Spacious breakroom and cubicle areas- up to eight(8) cubes possible



JAMESTOWNE EXECUTIVE OFFICES

31000 TELEGRAPH ROAD, BINGHAM FARMS, MI.



Beachum & Poeser

JAMESTOWNE EXECUTIVE OFFICES
 31000 TELEGRAPH ROAD, BINGHAM FARMS
 APPROX. 2,690 R.S.F.