

Bingham Farms - Jamestowne 31100 Building - 1,320 Sq. Ft



PROPERTY ADDRESS:

31100 Telegraph Road
Suite 210
Bingham Farms, MI 48025

SUITE SIZE: 1,320 Sq. Ft.

AVAILABLE: Immediately

FLOORPLAN: See page 2

LEASE RATE: Negotiable

LEASE TERM: Negotiable

DEMOGRAPHICS:

Oakland County, MI:

Population (2015): 1,243,970
Median household income (2015): \$67,465
Median house value (2015): \$178,900

Bingham Farms, MI:

Population (2015): 1,133
Median household income (2015): \$102,083
Median house value (2015): \$361,500



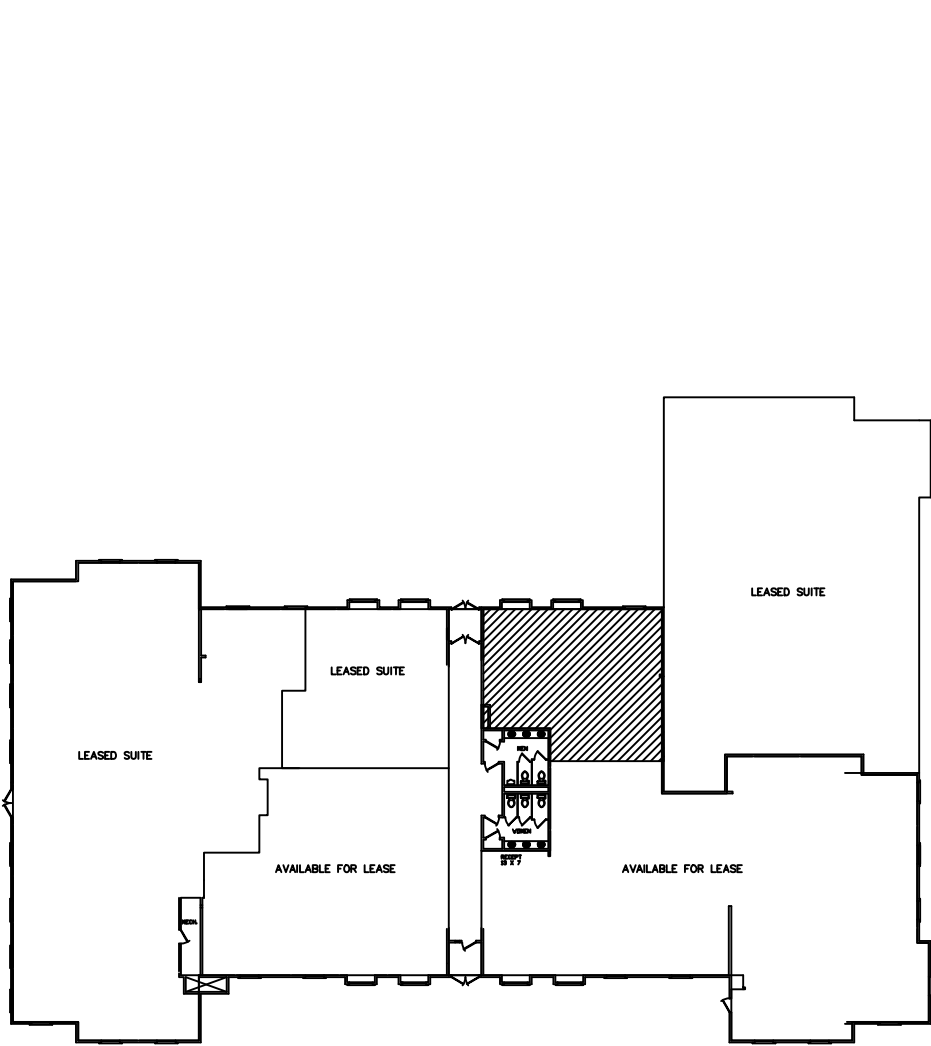
SUITE DESCRIPTION:

Nice office available in the beautiful Jamestowne Professional Office building.

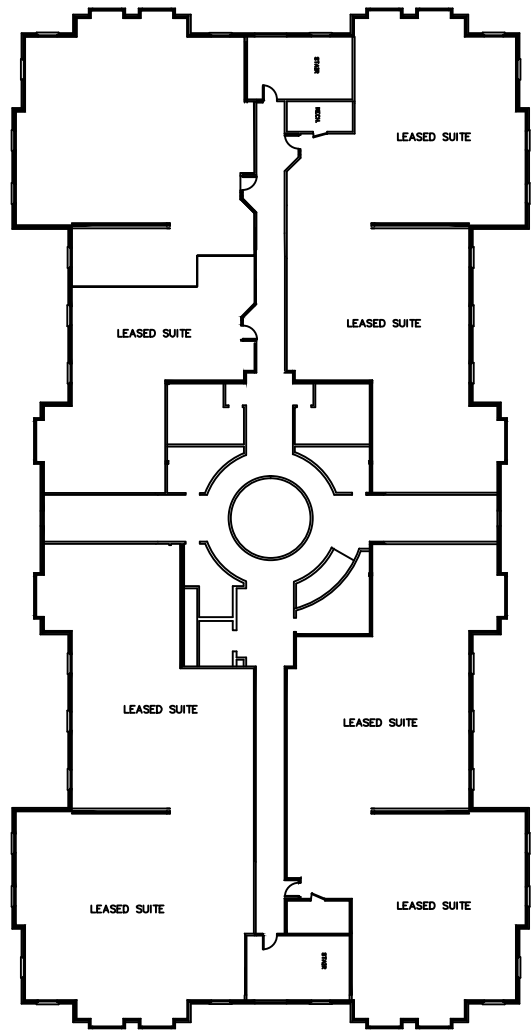
Suite features:

- 2 windowed offices
- 2 non-windowed offices
- Nice, large reception area upon entry
- A nice waiting area
- An employee coffee room with sink and countertop.

Other features include: windows that open; individual control over HVAC and plenty of convenient parking.



JAMESTOWNE EXECUTIVE OFFICES
31100 TELEGRAPH ROAD, BINGHAM FARMS, MI.
MAIN FLOOR AND TERRACE LEVEL



JAMESTOWNE EXECUTIVE OFFICES
31100 TELEGRAPH ROAD, BINGHAM FARMS, MI.
FIRST AND SECOND FLOOR SUITES



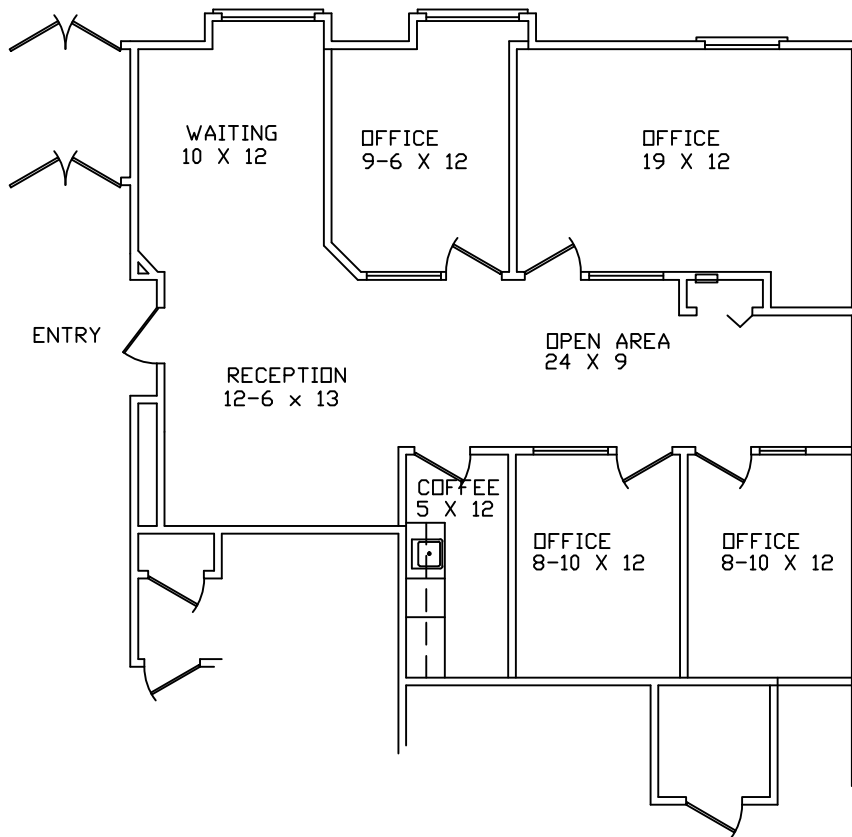
13 MILE ROAD

TELEGRAPH ROAD

JAMESTOWNE EXECUTIVE OFFICES

31100 TELEGRAPH ROAD, BINGHAM FARMS, MI.

AVAILABLE FOR LEASE
SUITE #210
APPROX. 1,320 R.S.F.
10-2-2020



PARTIAL FIRST FLOOR PLAN

SCALE: 1/8" = 1'-0"

Beachum & Roeser

DEVELOPMENT AND MANAGEMENT COMPANY

FOR INFORMATION
CALL:
BILL BEACHUM
248-647-7500