

Bingham Farms - Jamestowne 31100 Building - 1,360 Sq. Ft



PROPERTY ADDRESS:

31100 Telegraph Road
Suite 220
Bingham Farms, MI 48025

SUITE SIZE: 1,360 Sq. Ft.

AVAILABLE: Immediately

FLOORPLAN: See page 2

LEASE RATE: Negotiable

LEASE TERM: Negotiable

DEMOGRAPHICS:

Oakland County, MI:

Population (2015): 1,243,970
Median household income (2015): \$67,465
Median house value (2015): \$178,900

Bingham Farms, MI:

Population (2015): 1,133
Median household income (2015): \$102,083
Median house value (2015): \$361,500



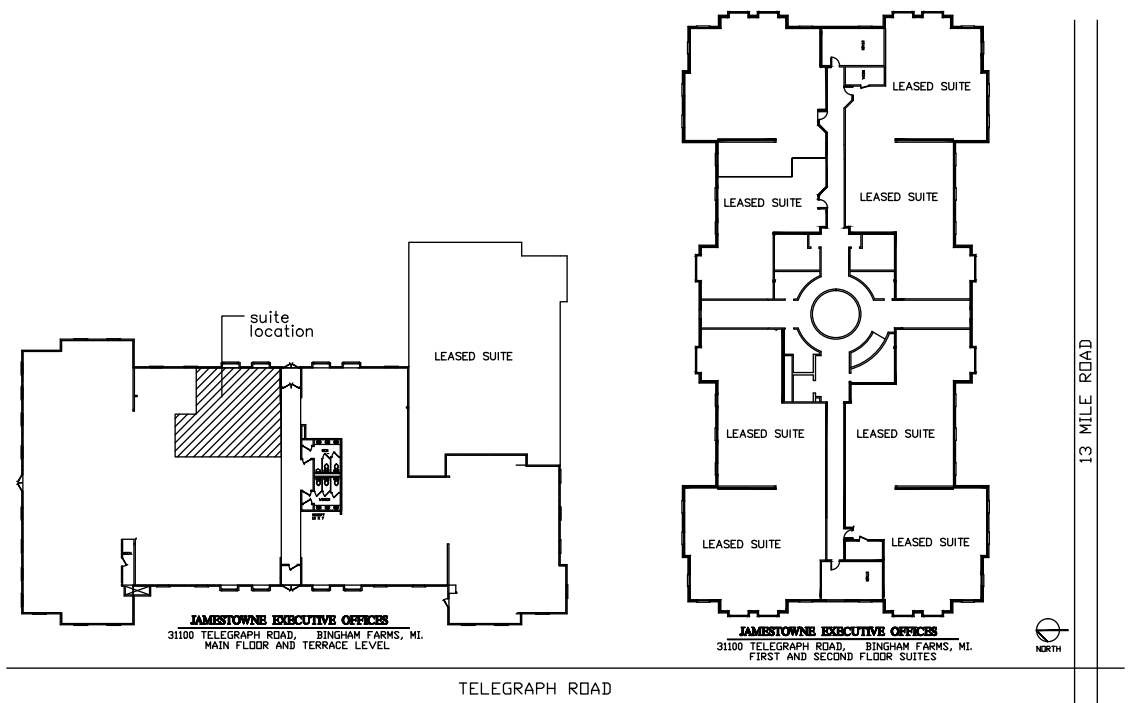
SUITE DESCRIPTION:

Suite features:

- 2 windowed offices
- 1 non-windowed office
- Nice reception area upon entry
- Large conference room
- A copy/supply room
- An employee lounge with sink/countertop

Other features include: windows that open; individual control over HVAC and plenty of convenient parking.

Suite 220 can be combined with Suite 230 for a total of 3,433 Sq. Ft.



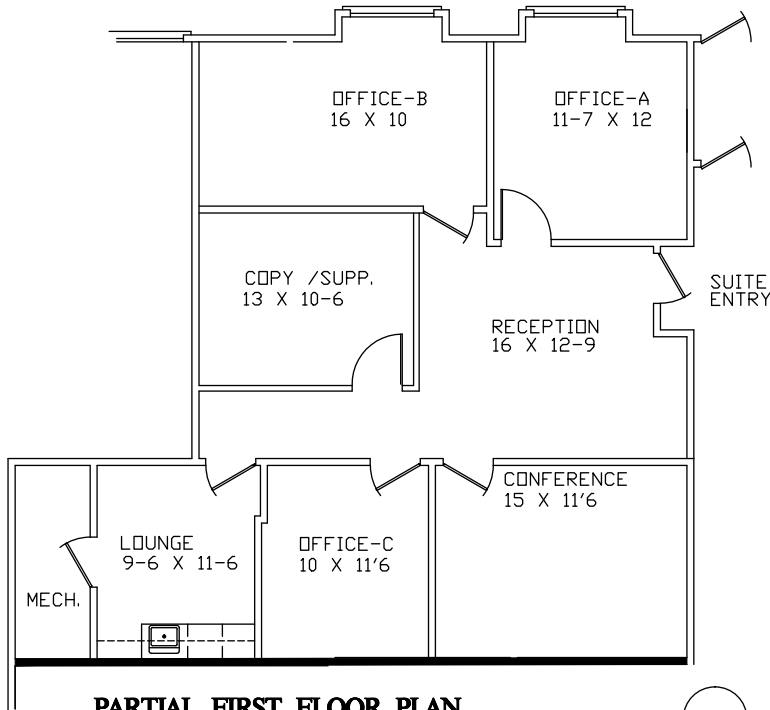
JAMESTOWNE EXECUTIVE OFFICES

31100 TELEGRAPH ROAD, BINGHAM FARMS, MI.

AVAILABLE FOR LEASE

APPROX. 1,360 R.S.F.

SUITE 220
10-2-2020



PARTIAL FIRST FLOOR PLAN

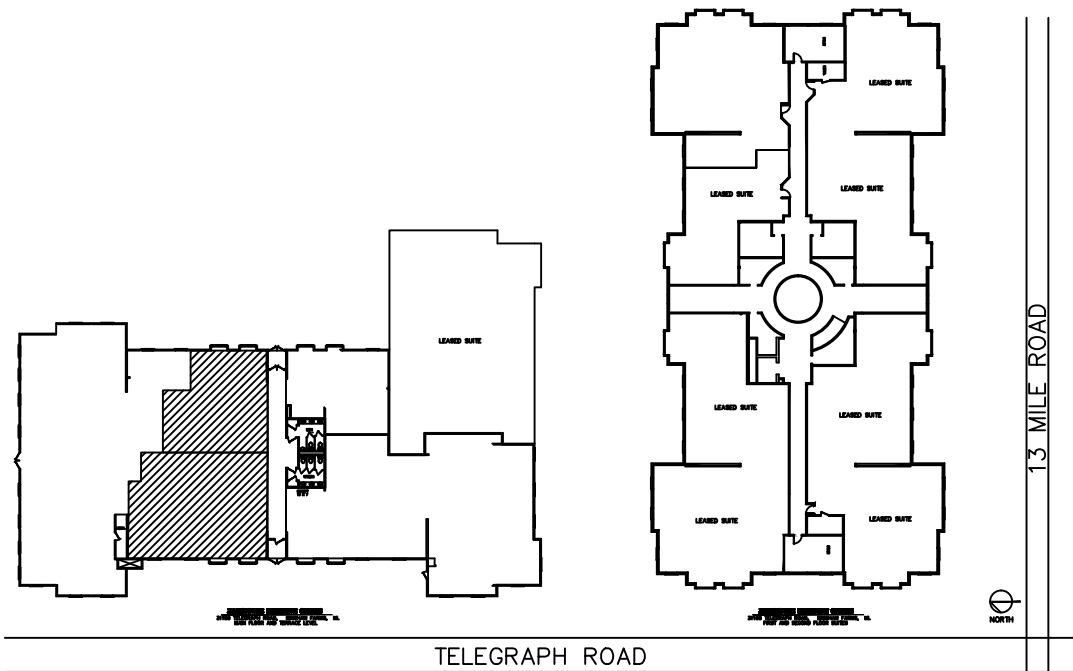
SCALE: 1/8"=1'-0"



Beachum & Proser

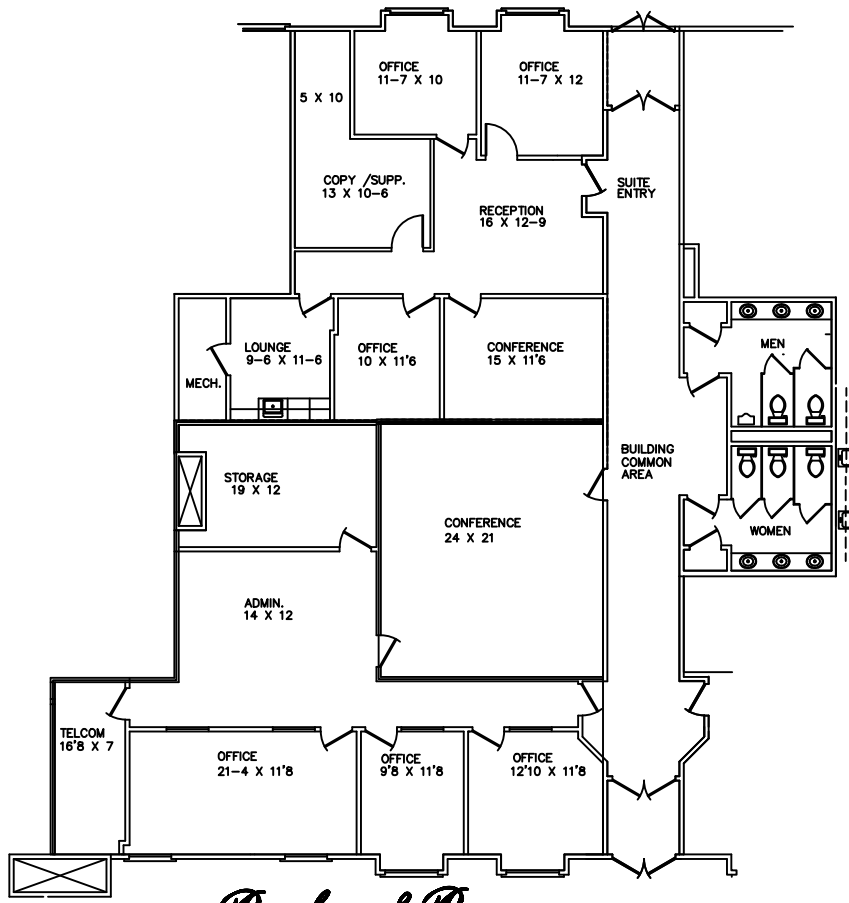
MANAGEMENT AND DEVELOPEMENT COMPANY

FOR INFORMATION
CONTACT:
BILL BEACHUM
248-647-7500



JAMESTOWNE EXECUTIVE OFFICES

31100 TELEGRAPH ROAD, BINGHAM FARMS, MI.
 AVAILABLE FOR LEASE
 SUITE #220/230
 APPROX. 3,433 R.S.F.
 10-2-2020



MANAGEMENT AND DEVELOPEMENT COMPANY
 FOR INFORMATION
 CONTACT:
 BILL BEACHUM
 248-647-7500