

Bingham Farms - Jamestowne 31100 Building - 2,073 Sq. Ft



PROPERTY ADDRESS:

31100 Telegraph Road
Suite 230
Bingham Farms, MI 48025

SUITE SIZE: 2,073 Sq. Ft.

AVAILABLE: Immediately

FLOORPLAN: See page 2

LEASE RATE: Negotiable

LEASE TERM: Negotiable

DEMOGRAPHICS:

Oakland County, MI:

Population (2015): 1,243,970
Median household income (2015): \$67,465
Median house value (2015): \$178,900

Bingham Farms, MI:

Population (2015): 1,133
Median household income (2015): \$102,083
Median house value (2015): \$361,500



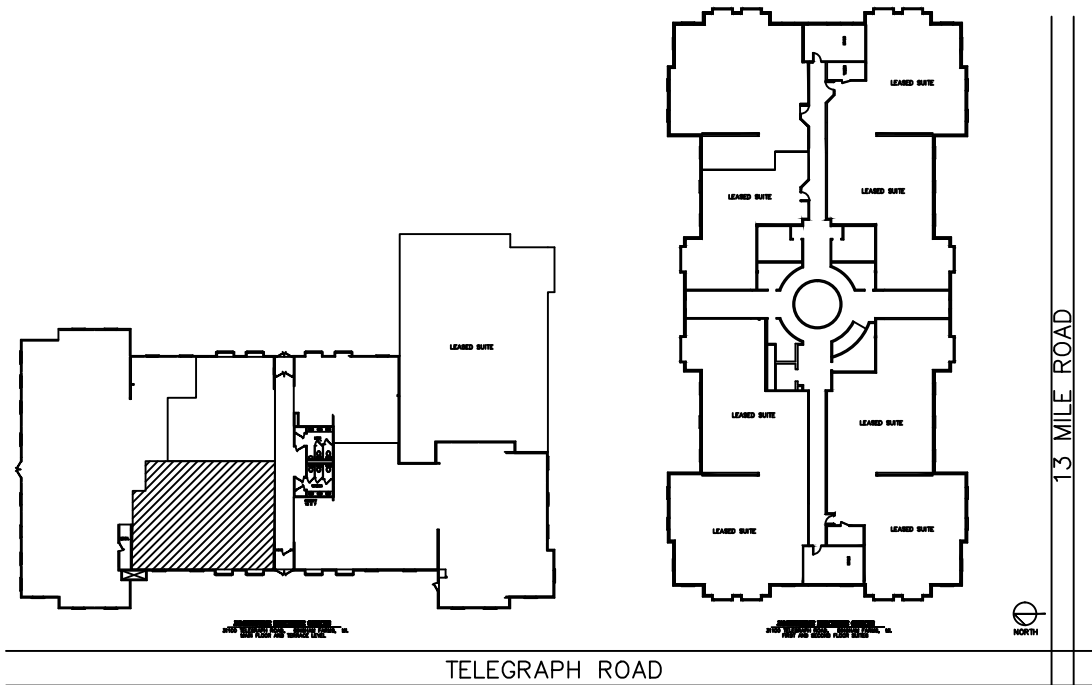
SUITE DESCRIPTION:

Suite features:

- 3 windowed offices
- Large admin area
- Large conference room
- A storage room

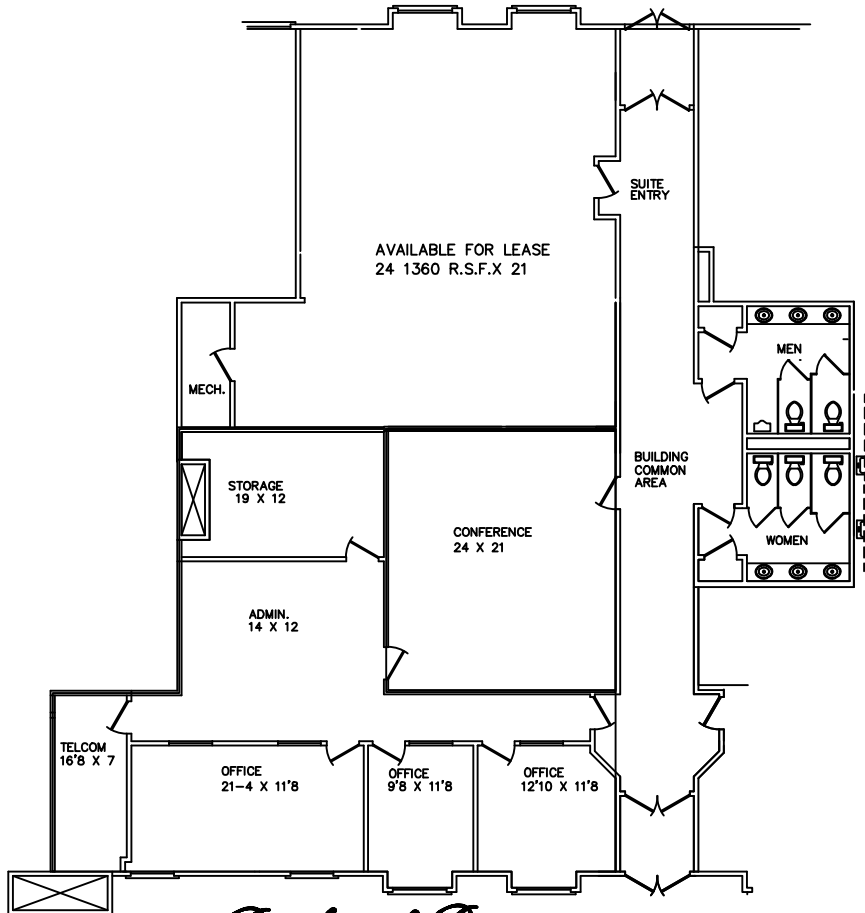
Other features include: windows that open; individual control over HVAC and plenty of convenient parking.

Suite 230 can be combined with Suite 220 for a total of 3,433 Sq. Ft.



JAMESTOWNE EXECUTIVE OFFICES

31100 TELEGRAPH ROAD, BINGHAM FARMS, MI.
 AVAILABLE FOR LEASE
 SUITE #230
 APPROX. 2,073 R.S.F.
 10-2-2020



Beachum & Pioser

MANAGEMENT AND DEVELOPEMENT COMPANY

FOR INFORMATION

CONTACT:

BILL BEACHUM
 248-647-7500

