

Plymouth - Pinehurst Building - 1,755 Sq. Ft



PROPERTY ADDRESS:

44670 Ann Arbor Road
Suite 130A
Plymouth, MI 48170

SUITE SIZE: 1,755 Sq. Ft.

AVAILABLE: Immediately

FLOORPLAN: See page 2

LEASE RATE: Negotiable

LEASE TERM: 5 year term

DEMOGRAPHICS:

Plymouth, MI:

Population (2005): 1,214,361

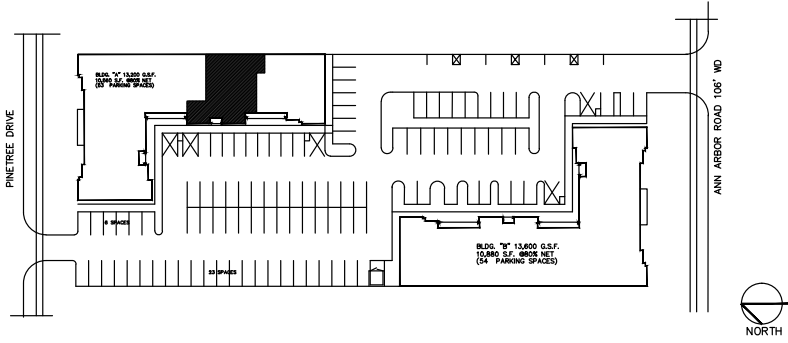
Median household income (2005): \$64,022

Median house value (2005): \$245,269



SUITE DESCRIPTION:

Nice suite available that features: 4 nicely sized, corner, windowed offices; a waiting area upon entry; an open admin area; a copy room with sink and counter and 2 private lavatories.



PINEHURST EXECUTIVE OFFICES

44670 ANN ARBOR ROAD
PLYMOUTH, MICHIGAN

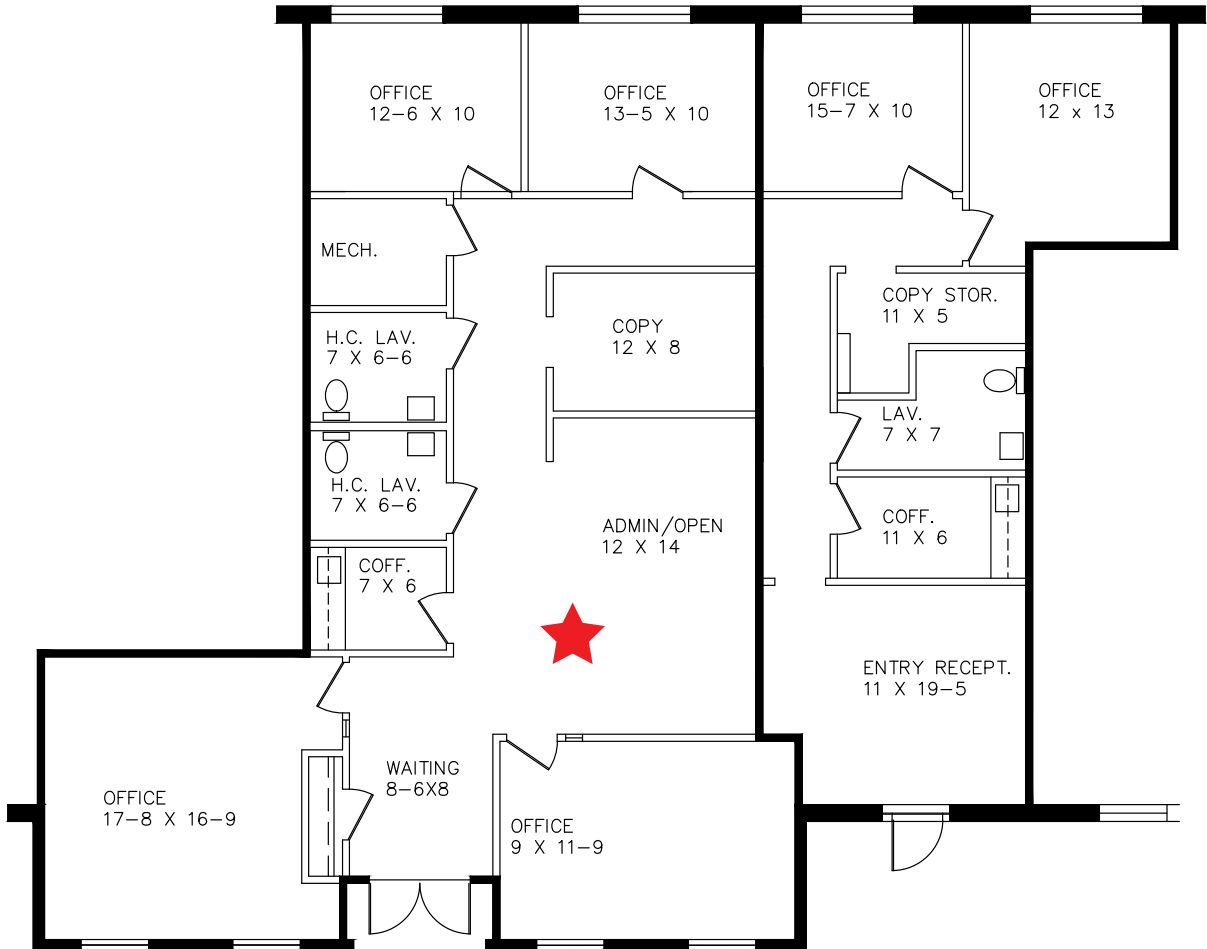
PROPOSED SPLIT
PROPOSED SPACE PLAN "A"

1,755 U. SQ. FT.

867 U. SQ. FT.

Suite 130A

SUITE #130
7-26-2019



Beachum & Roeser

MANAGEMENT CORPORATION

FOR INFORMATION
CONTACT
BILL BEACHUM
248-647-7500