

## Plymouth, MI - Pinehurst Building - 1,135 Sq. Ft



**PROPERTY ADDRESS:**

44670 Ann Arbor Road  
Suite E  
Plymouth, MI 48170

**SUITE SIZE:** 1,135 Sq. Ft.

**AVAILABLE:** Immediately

**FLOORPLAN:** See page 2

**LEASE RATE:** Negotiable

**LEASE TERM:** Negotiable

**DEMOGRAPHICS:**

***Plymouth, MI:***

Population (2005): 1,214,361

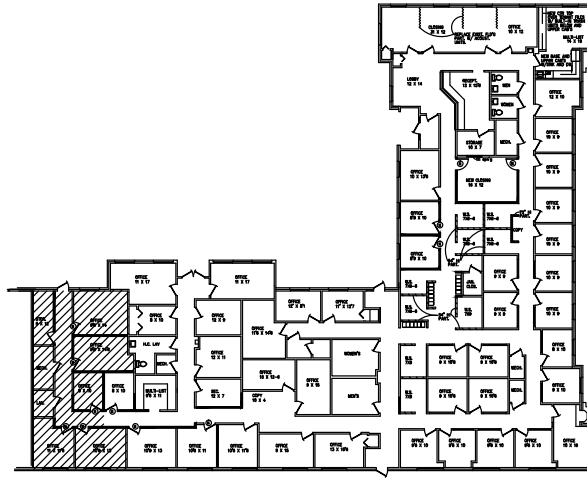
Median household income (2005): \$64,022

Median house value (2005): \$245,269



**SUITE DESCRIPTION:**

Suite features: 3 windowed offices; 3 non-windowed offices; a storage room and a private lavatory. Other features include: windows that open; individual control over the HVAC and plenty of convenient parking.



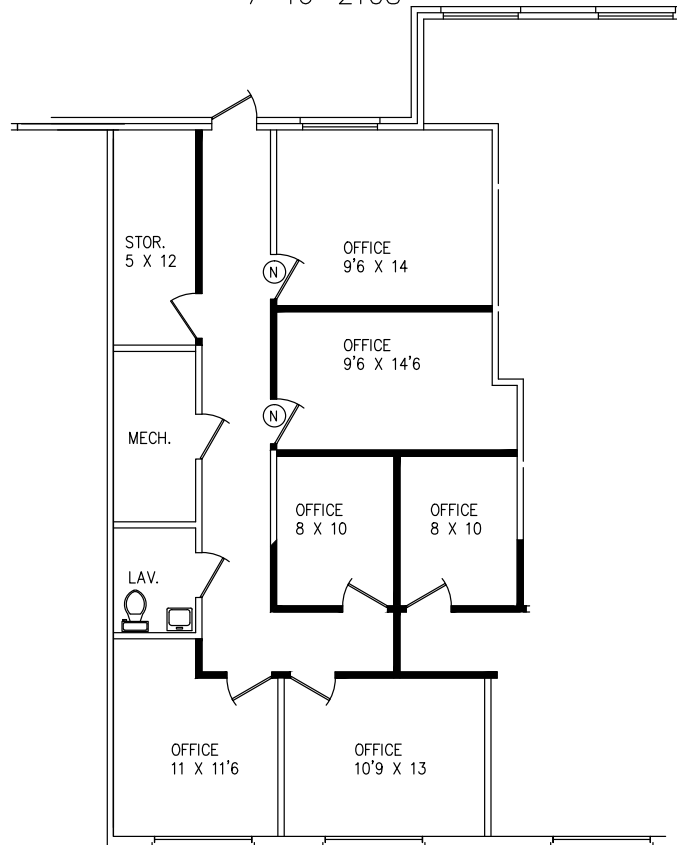
ANN ARBOR TRIAL

PINEHURST EXECUTIVE OFFICES

44670 ANN ARBOR ROAD  
PLYMOUTH, MICHIGAN

AVAILABLE FOR LEASE  
APPROX. 1,135 SQ.FT.

SUITE - E  
7-16-2108



*Beachum & Poeser*

DEVELOPMENT & MANAGEMENT CORPORATION

FOR INFORMATION CALL:

BILL BEACHUM  
248-647-7500