

Ann Arbor - Williamsburg VII Building - 976 Sq. Ft



PROPERTY ADDRESS:

1601 Briarwood Circle
Suite 200
Ann Arbor, MI 48108

SUITE SIZE: 976 Sq. Ft.

AVAILABLE: Immediately

FLOORPLAN: See page 2

LEASE RATE: Negotiable

LEASE TERM: Negotiable

DEMOGRAPHICS:

Ann Arbor, MI:

Population (2015): 117,070

Median household income (2015): \$55,990

Median house value (2015): \$240,700

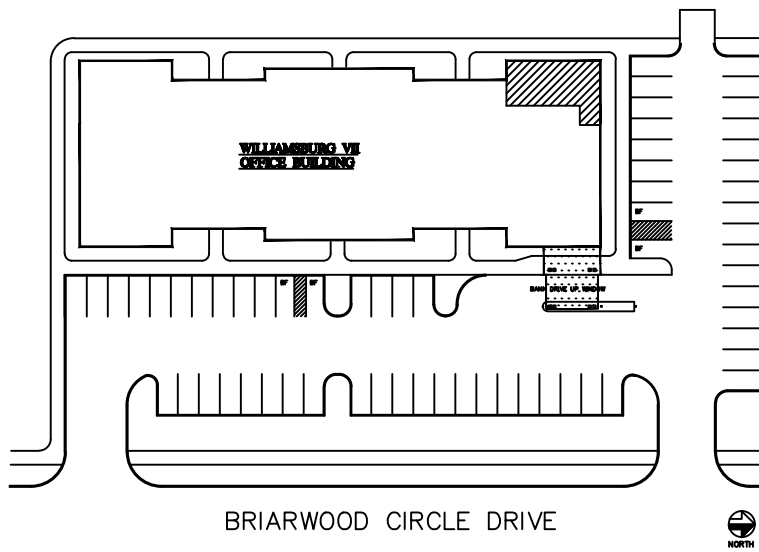


SUITE DESCRIPTION:

Nice corner suite that is perfect for a 3-4 person office.

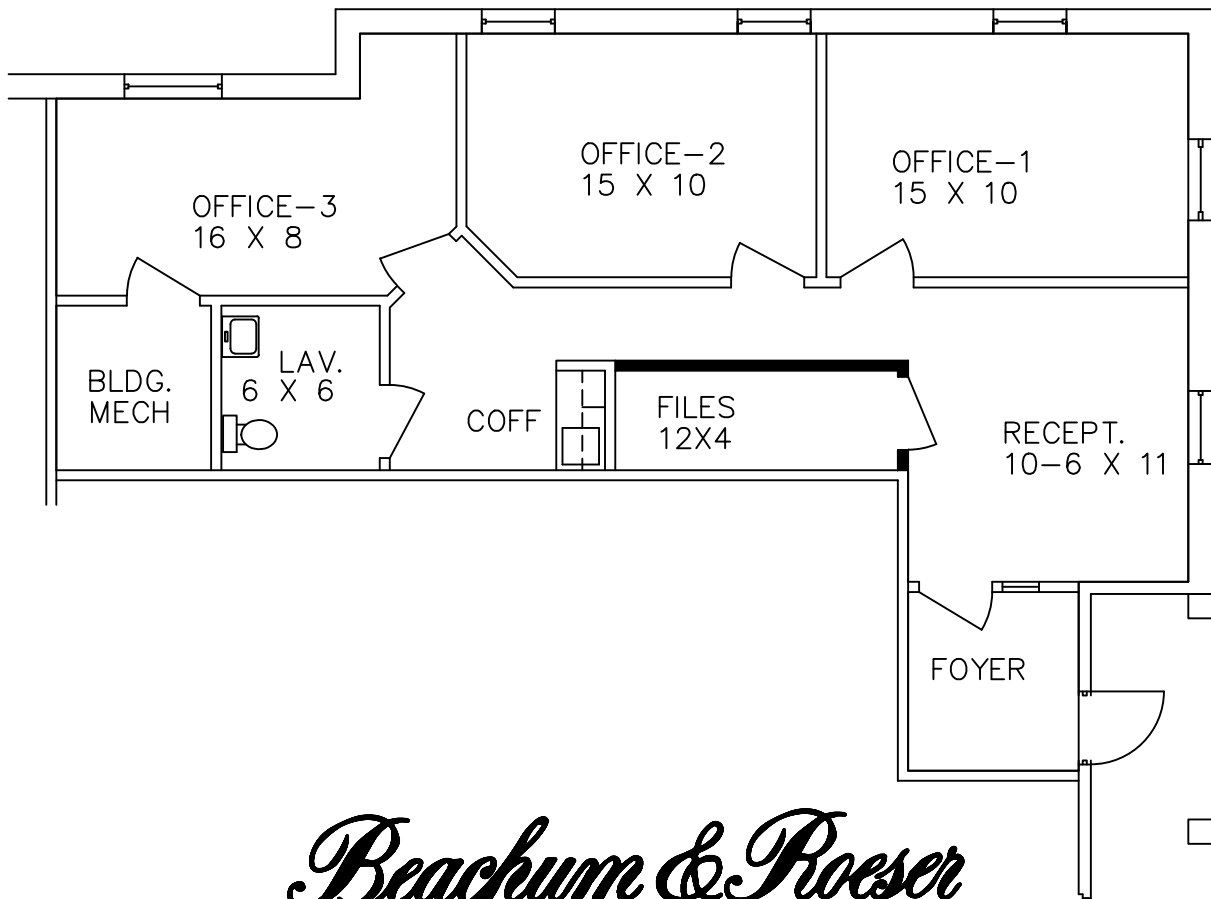
Suite features:

- 3 windowed offices
- A windowed reception area
- A foyer entry
- File/copy room
- Coffee room with sink and counter
- Private lavatory
- Windows that open
- Individual control of HVAC
- Plenty of convenient parking



WILLIAMSBURG VII - ANN ARBOR

1601 BRIARWOOD CIRCLE — ANN ARBOR, MI.
 SUITE 200
 AVAILABLE FOR LEASE 976 U.S.F.



Beachum & Poeser

DEVELOPMENT & MANAGEMENT CORPORATION

CALL:

BILL BEACHUM
 248-647-7500